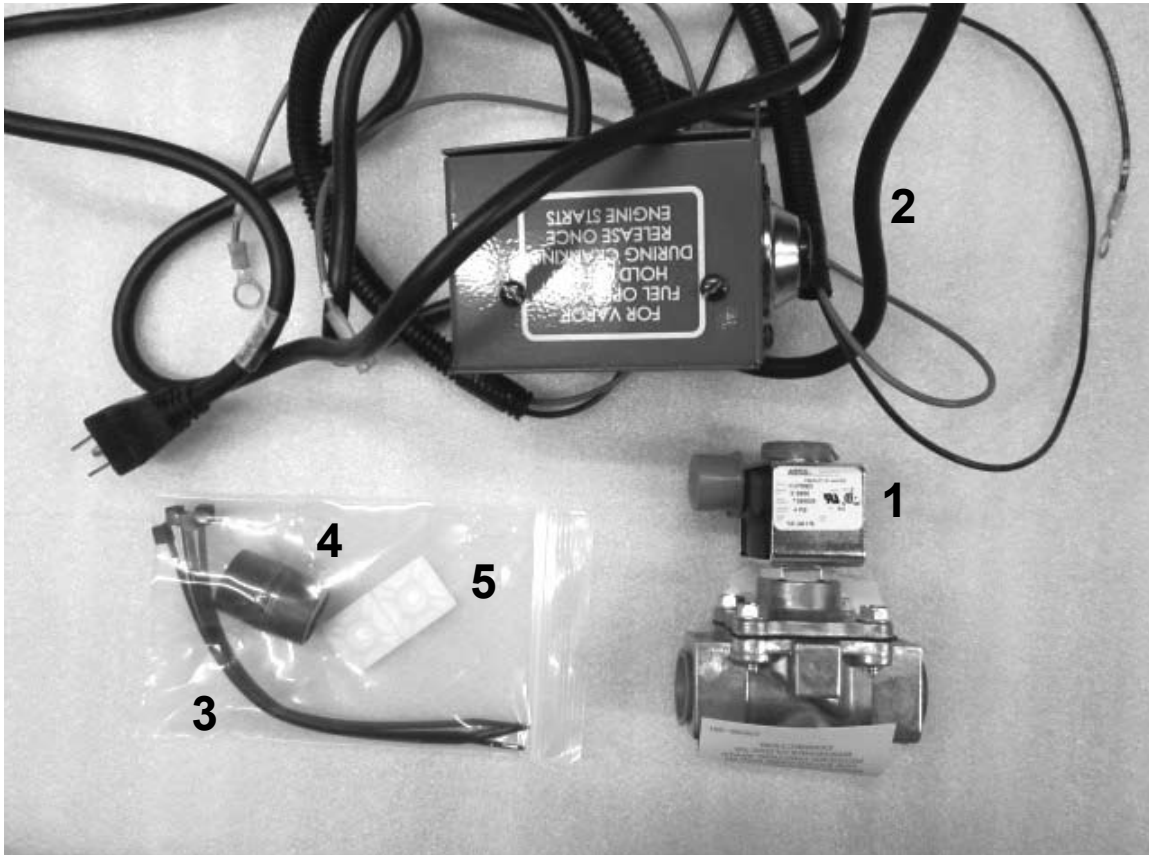


# WINCO INC<sup>®</sup>

## INSTALLATION INSTRUCTIONS LOW PRESSURE FUEL SOLENOID KIT FOR MODEL: HPS12000HE/F

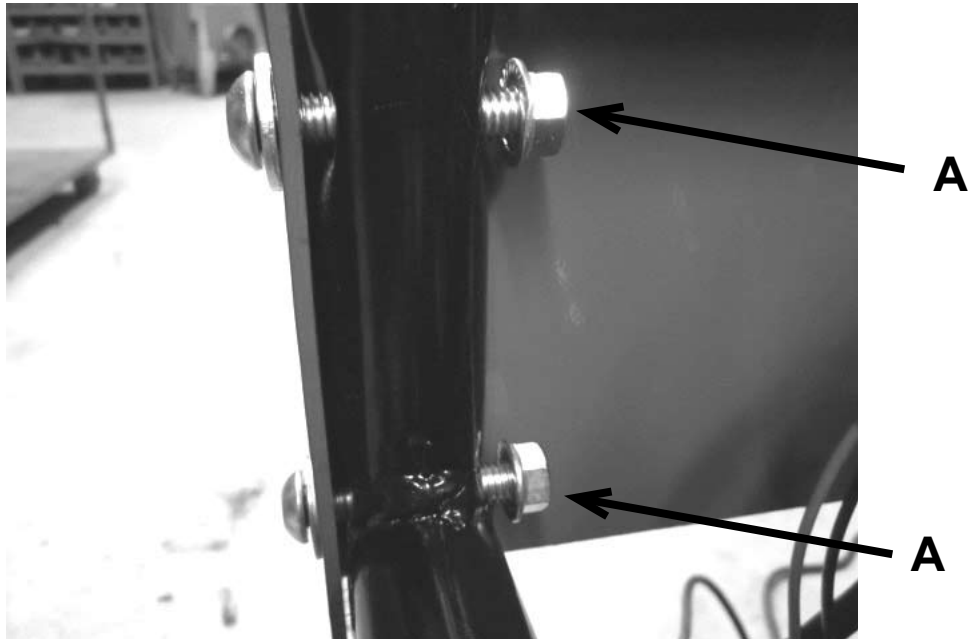


### COMPONENT LIST

REF. #	PART #	DESCRIPTION	QTY.
1	42942-000	Gas Solenoid Valve	1
2	64856-008	Control Box Assembly	1
3	49975-011	7" Cable Tie	4
4	54074-006	3/4" X 1 1/2" Pipe Nipple	1
5	95810-000	Cable Tie Mount	3

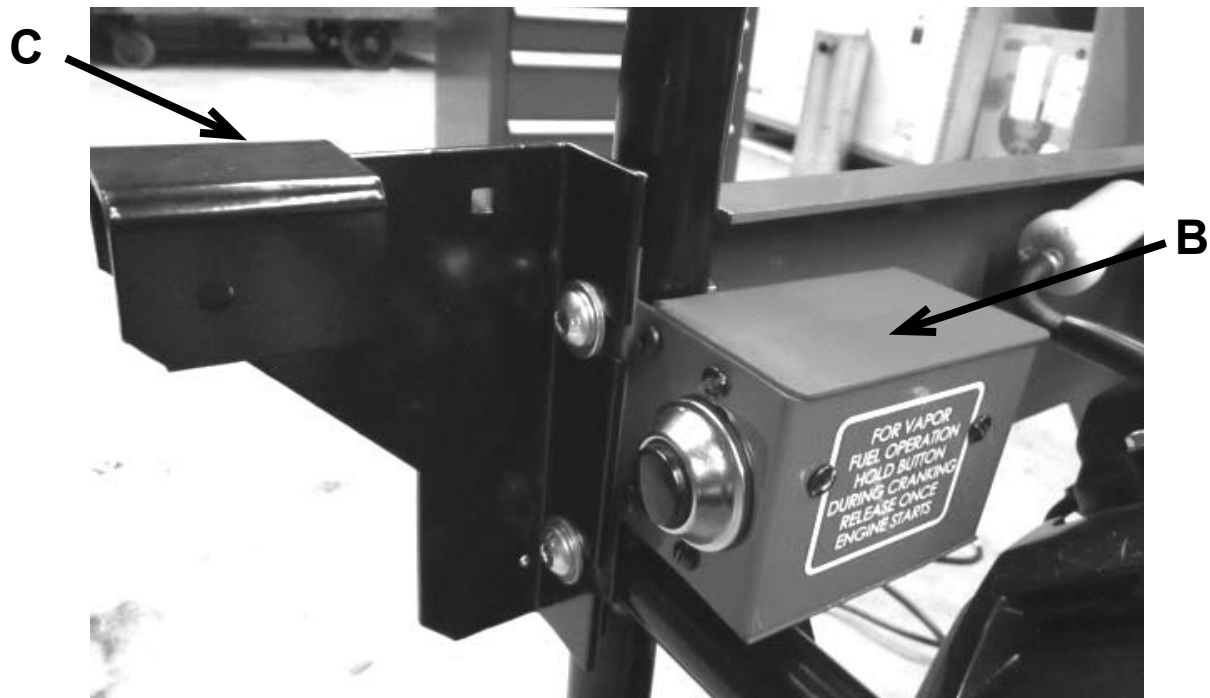
## STEP 1

- Loosen the two nuts (A) holding the left side panel on. (The left side standing in front of the engine). The control box assembly will be mounted here.



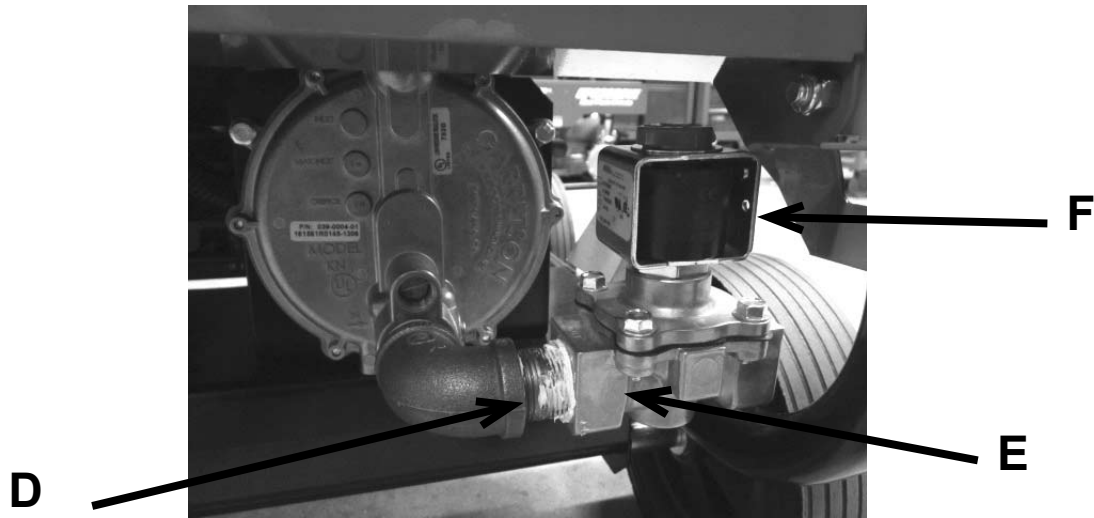
## STEP 2

- Slide the control box assembly (B) on the bolts behind the side panel and slide the dolly kit handle bracket (C) on the bolts behind the washers.
- Re-tighten the nuts.



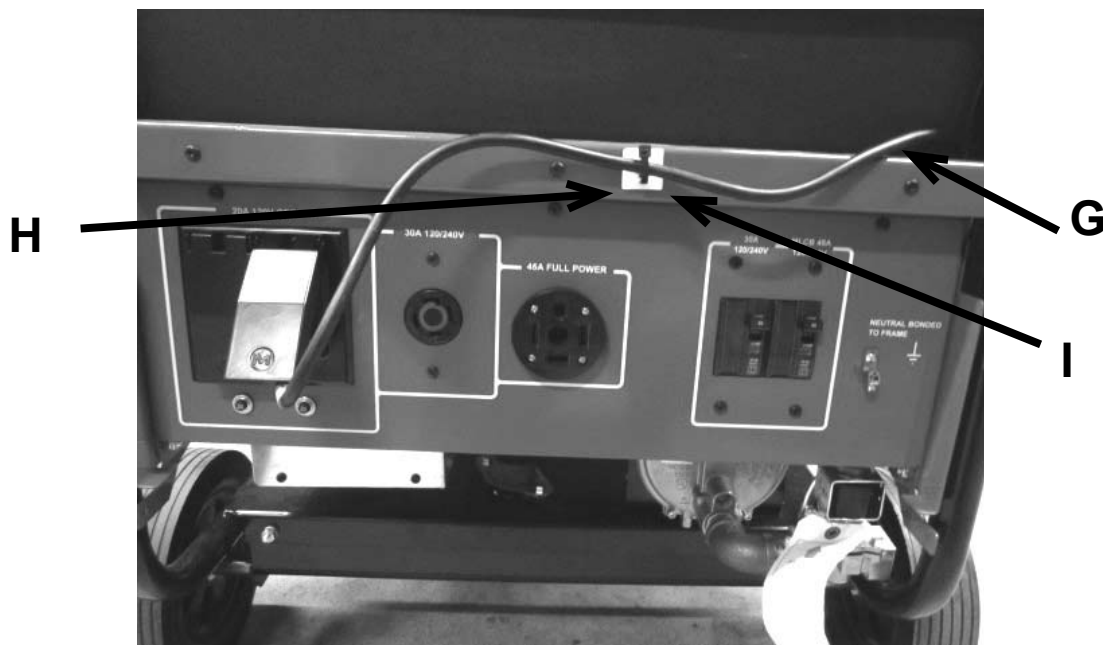
### STEP 3

- Thread the pipe nipple (D) onto the 90° elbow using pipe sealant.
- Tighten the pipe nipple with a pipe wrench.
- Thread the gas solenoid valve (E) onto the pipe nipple using pipe sealant.
- ***Make sure the solenoid end marked “OUT” is toward the generator and the solenoid end marked “IN” is toward the supply line.***
- Tighten with a pipe wrench.
- Connect wires labeled 1 & 21 from control box harness to the solenoid (F). Polarity does not matter.



### STEP 4

- Route power cord (G) from control box assembly along the side of the generator set and through the area between the fuel tank and the receptacle panel.
- Plug cord in a 120 volt receptacle.
- Secure cord with cable tie hold down (H) and cable tie (I).



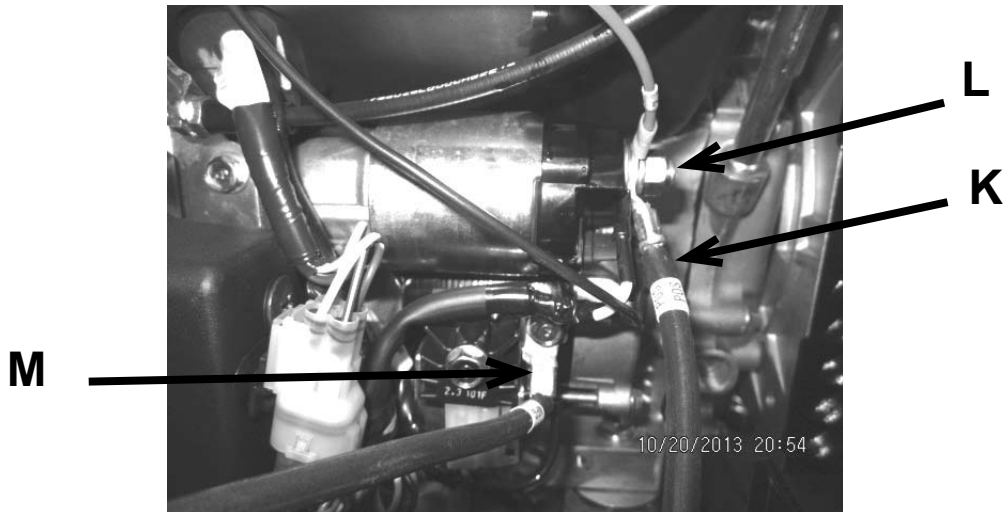
## STEP 5

- Secure the power cord and solenoid wires to the back side of the side panel (J) using the cable tie hold downs and cable ties.



## STEP 6

- Take the battery positive cable (K) loose from the starter solenoid (L). Route RED wire # 2 to the starter solenoid. Replace nut, cable and re-tighten.
- Take the battery negative cable (M) loose from the engine. Route BLACK wire # 1 to the battery negative bolt. Replace bolt, cable and re-tighten.



- Using any extra cable tie hold downs and cable ties provided, neatly tie excess wire loom, wire and power cord to prevent rubbing on the engine.
- TO START: Hold down control box button, turn key, engine will start. Once unit generates power (about 1 second) release button.

Winco Inc.  
Service Dept.  
507-357-6831