

# METER-RITE®

Grade-Level Double-Throw Switch  
Catalog No. T-5233-6, T-6233-6  
600 Vac  
NEMA 3R Rainproof Enclosure

This Double-Throw Switch can be installed in several different locations, depending upon the load it is to supply. If the Auxiliary Power Source is to supply power to the complete system, then the switch should be installed between the service disconnect and the distribution panel. ( See Example #1).

**NOTE:** Some authorities having jurisdiction and/or power suppliers will allow the Double-Throw Switch to be placed ahead of the Service Disconnect under certain conditions. **CAUTION:** In these cases always be certain that available fault current will not exceed 10,000 amperes (RMS symmetrical).

In applications where the Auxiliary Power Source cannot supply enough power to operate all the loads, sub-panel may be added to the system. The loads that need to be operated from the Auxiliary Power Source are then connected to a sub-panel. For this type of installation, the Double-Throw Switch can be installed between the main distribution panel and the sub-panel. (See Example #2)

SCHEMATIC FOR CAT. NOS.

T-5233-6, T-6233-6

RONK ELECTRICAL INDUSTRIES, INC.  
NOKOMIS, ILLINOIS

Drawing Number

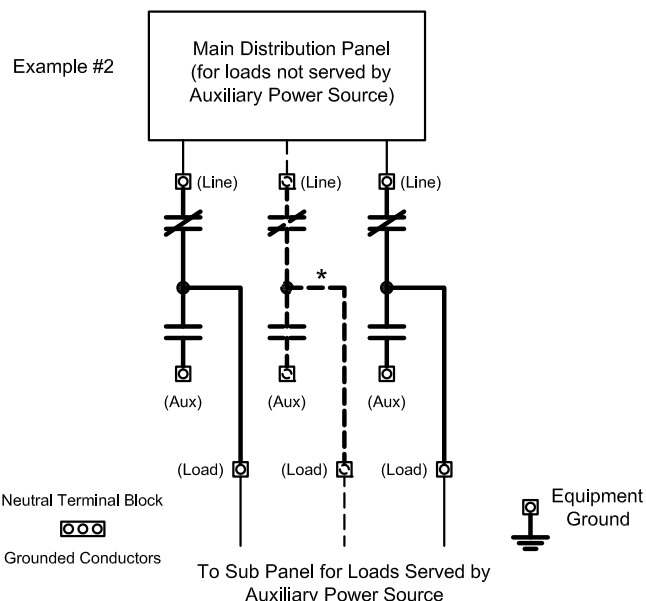
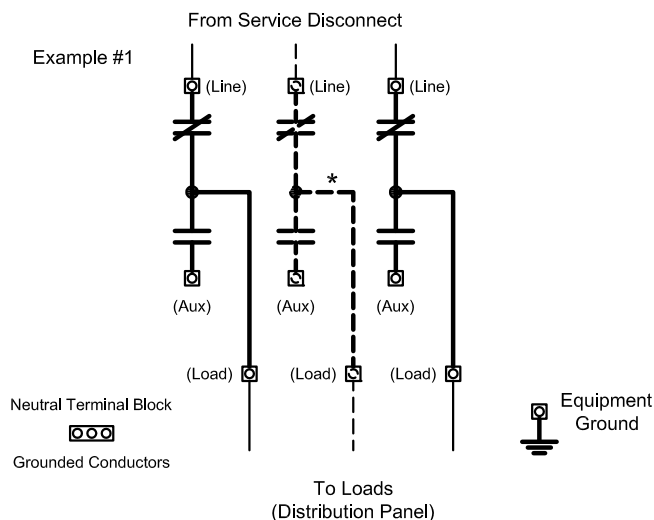
2-2701

Scale NONE

Drawn GMW

Date 12/04/13

Approved NCL



\* Center (3rd) pole not on catalog No. T5233-6.

USE COPPER OR ALUMINUM WIRE RATED 75°C, COPPER WIRE RECOMMENDED.

LOCATE OPENINGS FOR CONDUIT BELOW OPERATING HANDLE UNLESS LIQUID TIGHT HARDWARE IS UTILIZED.

**WARNING: ALL ADJUSTMENTS ON SWITCH HAVE BEEN MADE AT FACTORY AND MUST NOT BE CHANGED IN FIELD.**

SWITCH CATALOG NUMBER	PHASE	AMPS	CUSTOMER CONNECTIONS			
			LINE LUGS	AUX LUGS	LOAD LUGS	NEUTRAL
T-5233-6	1Ø	800 (Main) 600 (Aux)	750 MCM- 500 MCM CU-AL (2-HOLE LUG)	350 MCM- #4 CU-AL (2-HOLE LUG)	600 MCM- #2 CU-AL (3-HOLE LUG)	600 MCM- #6 CU-AL (6-HOLE BAR)
T-6233-6	3Ø	800 (Main) 600 (Aux)				

TIGHTENING TORQUE	
SOCKET SIZE (INCH)	TORQUE (IN-LB)
1/8	45
5/32	100
3/16	120
7/32	150
1/4	200
5/16	250
3/8	375
1/2	500
9/16	600

Revision Description

Change neutral connector to 600 MCM 6-Hole Bar.

Rev CN 0103

Date 11/13/14

BY NCL