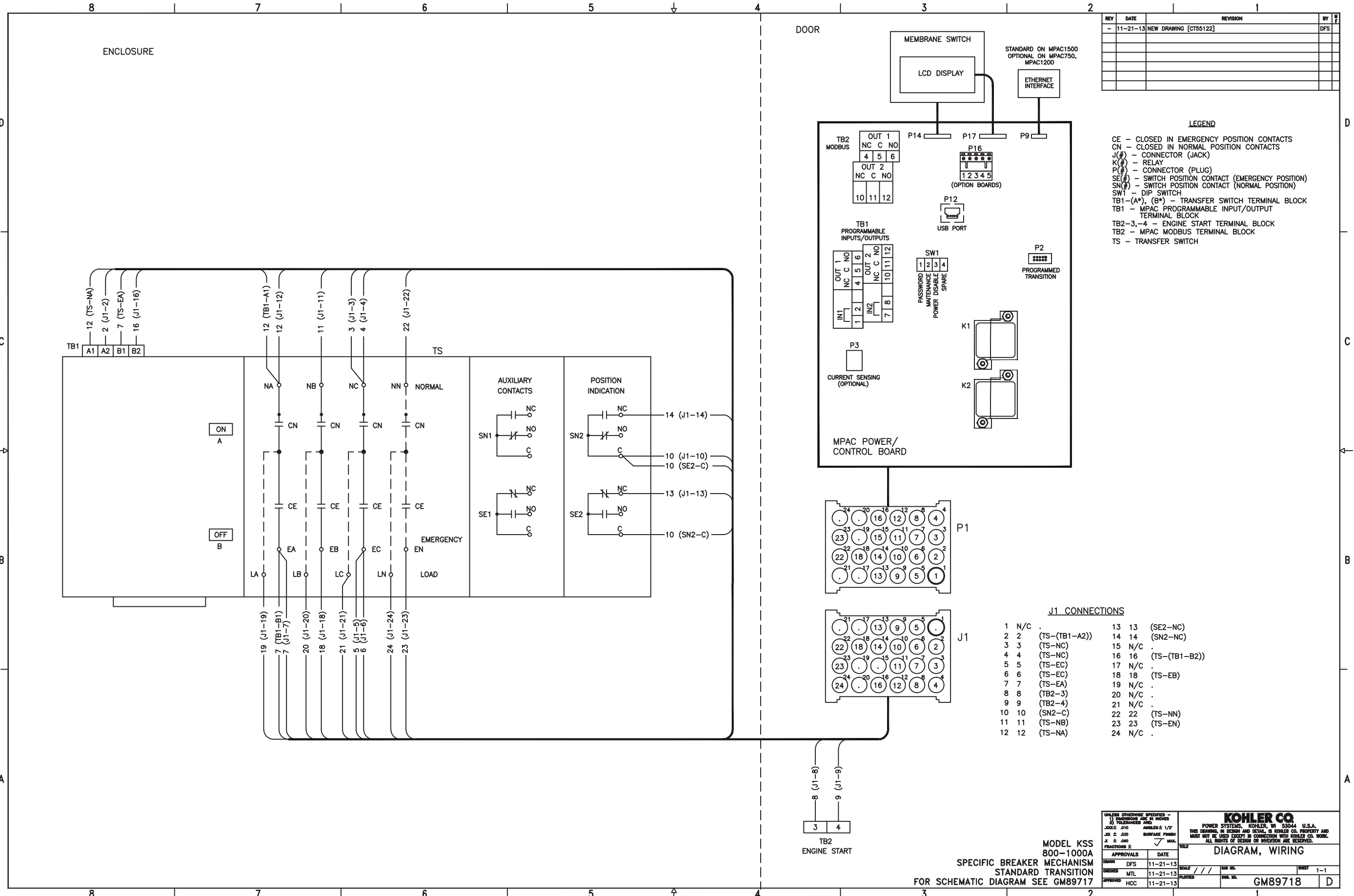


REV	DATE	REVISION	BY	APP
-	11-21-13	NEW DRAWING [CT55122]	DFS	

**LEGEND**

CE - CLOSED IN EMERGENCY POSITION CONTACTS  
 CN - CLOSED IN NORMAL POSITION CONTACTS  
 J(#)- - CONNECTOR (JACK)  
 K(#)- - RELAY  
 P(#)- - CONNECTOR (PLUG)  
 SE(#)- - SWITCH POSITION CONTACT (EMERGENCY POSITION)  
 SN(#)- - SWITCH POSITION CONTACT (NORMAL POSITION)  
 SW1 - DIP SWITCH  
 TB1-(A\*), (B\*) - TRANSFER SWITCH TERMINAL BLOCK  
 TB1 - MPAC PROGRAMMABLE INPUT/OUTPUT TERMINAL BLOCK  
 TB2-3,-4 - ENGINE START TERMINAL BLOCK  
 TB2 - MPAC MODBUS TERMINAL BLOCK  
 TS - TRANSFER SWITCH



**J1 CONNECTIONS**

1	N/C	13	13 (SE2-NC)
2	2 (TS-(TB1-A2))	14	14 (SN2-NC)
3	3 (TS-NC)	15	N/C
4	4 (TS-NC)	16	16 (TS-(TB1-B2))
5	5 (TS-EC)	17	N/C
6	6 (TS-EC)	18	18 (TS-EB)
7	7 (TS-EA)	19	N/C
8	8 (TB2-3)	20	N/C
9	9 (TB2-4)	21	N/C
10	10 (SN2-C)	22	22 (TS-NN)
11	11 (TS-NB)	23	23 (TS-EN)
12	12 (TS-NA)	24	N/C

APPROVALS	DATE	SCALE	SHEET
DESIGN DFS	11-21-13	///	1-1
DRAWING MTL	11-21-13	///	
APPROVED HCC	11-21-13	///	

**UNLESS OTHERWISE SPECIFIED -**  
 1) DIMENSIONS ARE IN INCHES  
 2) TOLERANCES ARE:  
 FRACTIONS ± .005  
 DECIMALS ± .010  
 ANGLES ± 1/2°  
 SURFACE FINISH  
 AS SHOWN

**KOHLER CO.**  
 POWER SYSTEMS, KOHLER, WI 53044 U.S.A.  
 THIS DRAWING, IN DESIGN AND DETAIL, IS KOHLER CO. PROPERTY AND  
 MUST NOT BE USED EXCEPT IN CONNECTION WITH KOHLER CO. WORK.  
 ALL RIGHTS OF DESIGN OR INVENTION ARE RESERVED.

**DIAGRAM, WIRING**

MODEL KSS 800-1000A  
 SPECIFIC BREAKER MECHANISM  
 STANDARD TRANSITION  
 FOR SCHEMATIC DIAGRAM SEE GM89717

DWG. NO. **GM89718**