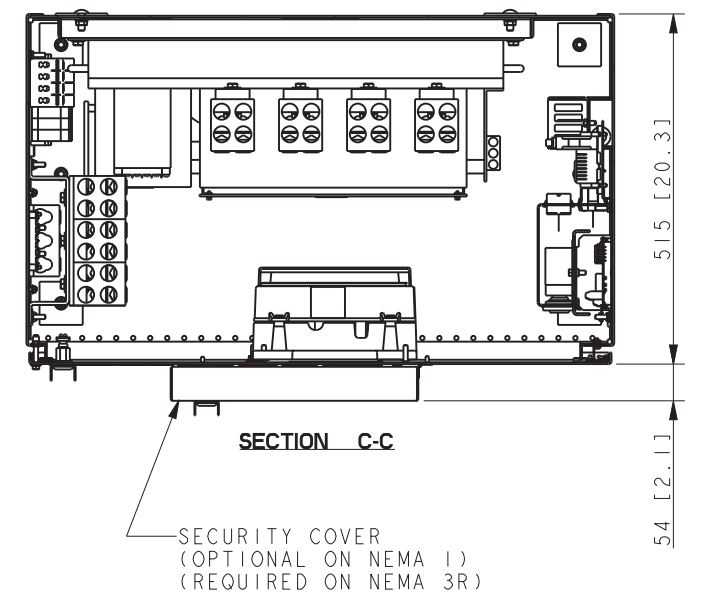
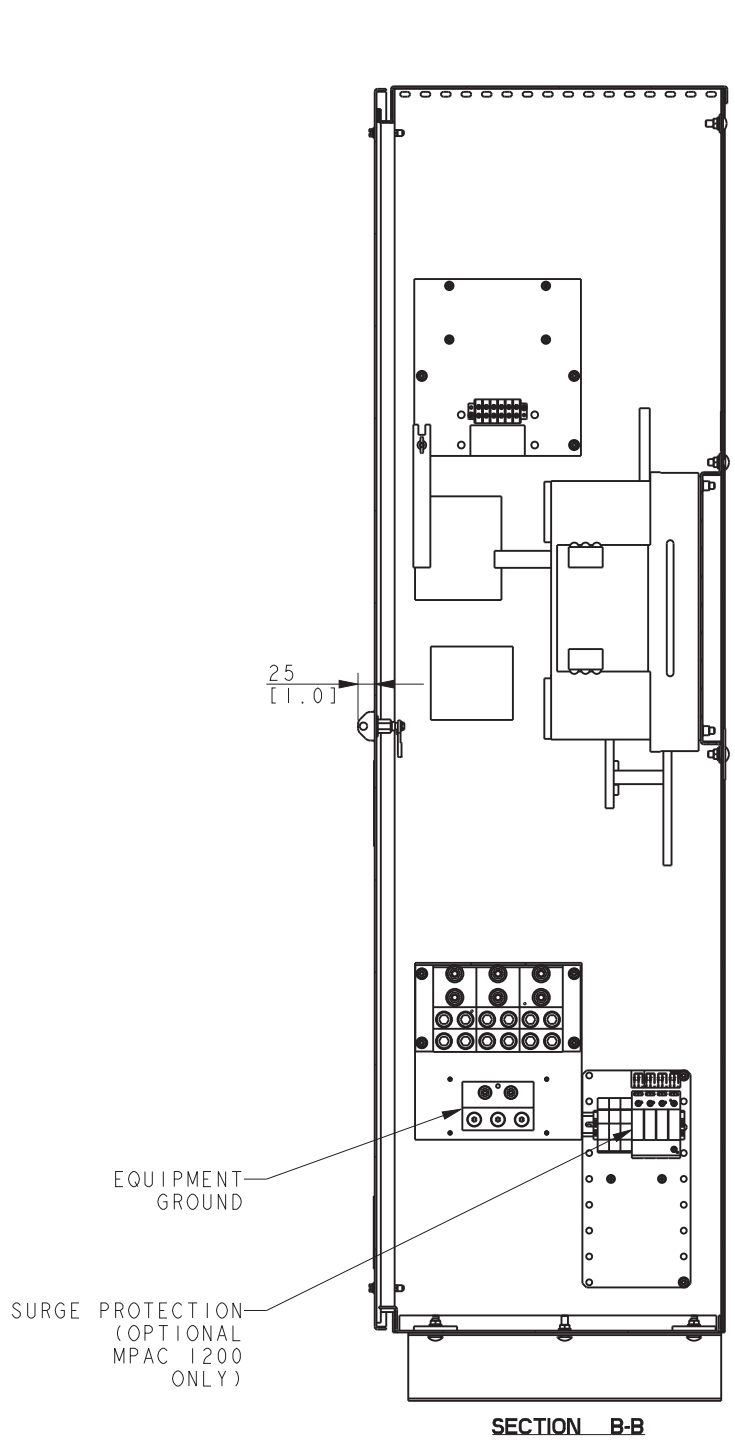
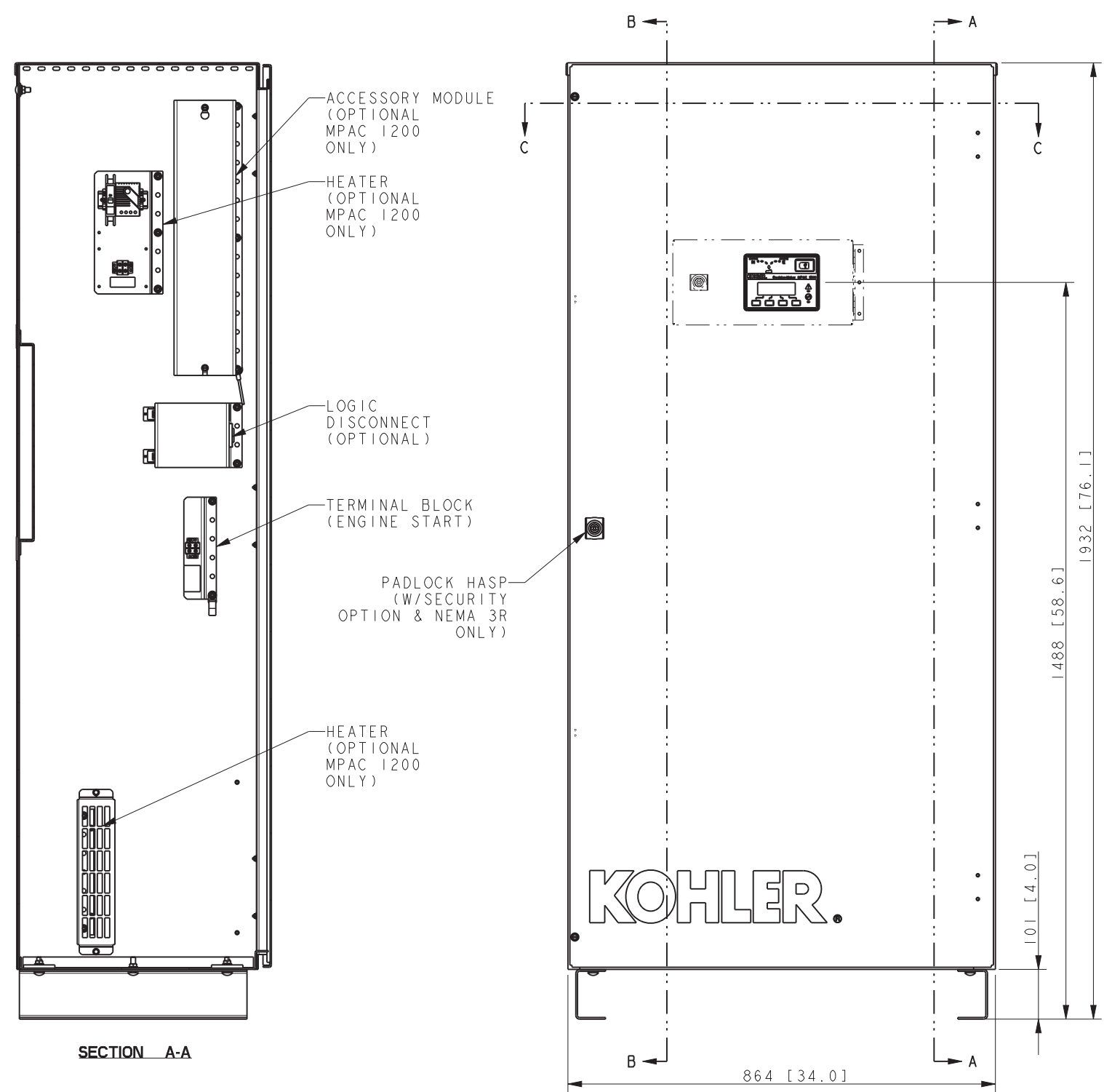


SEISMIC MOUNTING NOTE:
 FOR SEISMIC CERTIFIED UNITS,
 MOUNT WITH THE FOLLOWING HARDWARE:
WALL MOUNTED (STEEL)
 Ø9.53 [1.375] Dia. SAE GRADE 1 / ASTM A307 BOLTS.
WALL MOUNTED (CONCRETE)
 Ø9.53 [1.375] Dia. HILTI KWIK BOLT TZ-CS WITH MIN.
 EMBEDMENT 50.8 [2.00]; EDGE DISTANCE OF 101.6 [4.00]
 ON A 101.6 [4.00] THICK 4000 PSI CONCRETE WALL.
 HARDWARE TO COMPLY WITH SPECIFICATIONS
 ON ADV-7456.



KOHLER

NOTE:
 ALLOW FOR MINIMUM DOOR
 SWING CLEARANCE OF 864 [34.0]
 IN FRONT OF THE CABINET.

NOTES:
 DIMENSIONS IN [] ARE INCHES.
 FINISH - ANSI 49 GRAY.
 REFER TO OPERATORS MANUAL PRIOR TO
 INSTALLATION AND OPERATION OF SWITCH.
 FOR SEISMIC CERTIFIED UNITS, REFER TO
 ADV-7456 AND INSTALLATION INSTRUCTIONS.

SEE ADV-8565 FOR FULL MODEL CODE DEFINITION

STYLE	MECHANISM	TRANSITION	MPAC LOGIC	VOLTS	POLES	NEUTRAL	ENCLOSURE	AMPS	CONNECTION
KSS	SPECIFIC	STANDARD	750, 1200	208-480	3, 4	SOLID, SW	1, 3R	800, 1000	STANDARD

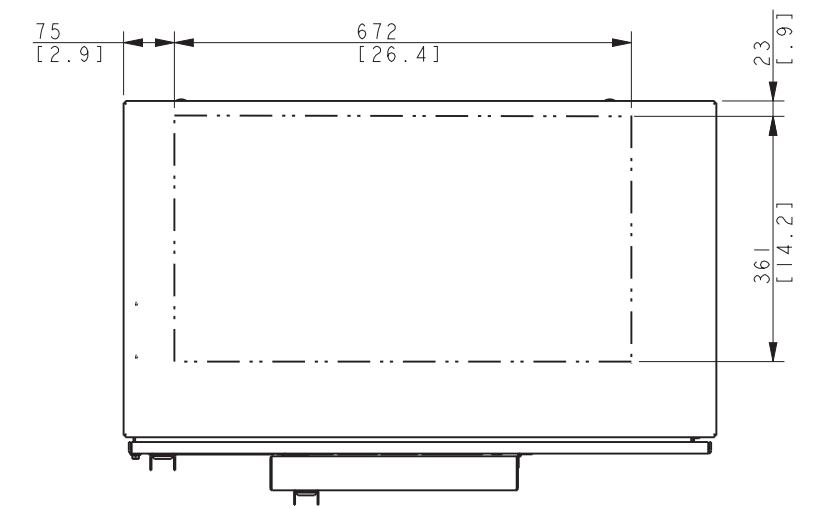
REV	DATE	REVISION	BY
-	8-23-13	NEW DRAWING [CT54441]	BTW
A	3-5-19	(A-5)(A-6) REMOVED SEISMIC PART GM81715 [CT193069]	ZHK

UNLESS OTHERWISE SPECIFIED -
 1) DIMENSIONS ARE IN MILLIMETERS
 2) TOLERANCES ARE:
 X.XX
 X.X
 X ANGLES
 SURFACE FINISH
 MAX.
 THIRD ANGLE PROJECTION

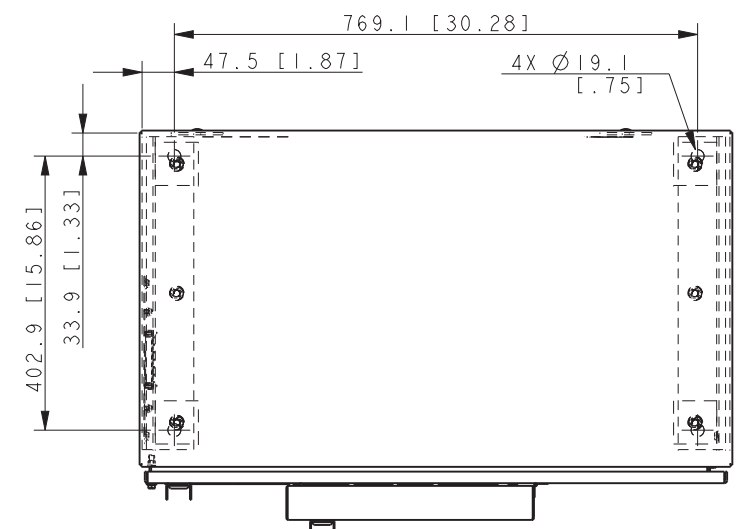
KOHLER CO. METRIC PRO-E
 POWER SYSTEMS, KOHLER, WI 53044 U.S.A.
 THIS DRAWING IN DESIGN AND DETAIL IS KOHLER CO.
 PROPERTY AND MUST NOT BE USED EXCEPT IN
 CONNECTION WITH KOHLER CO. WORK. ALL RIGHTS OF
 DESIGN OR INVENTION ARE RESERVED.

TITLE: DIMENSION PRINT
 SCALE: CAD NO. SHEET 1 of 2
 DWG NO. ADV-8592 D

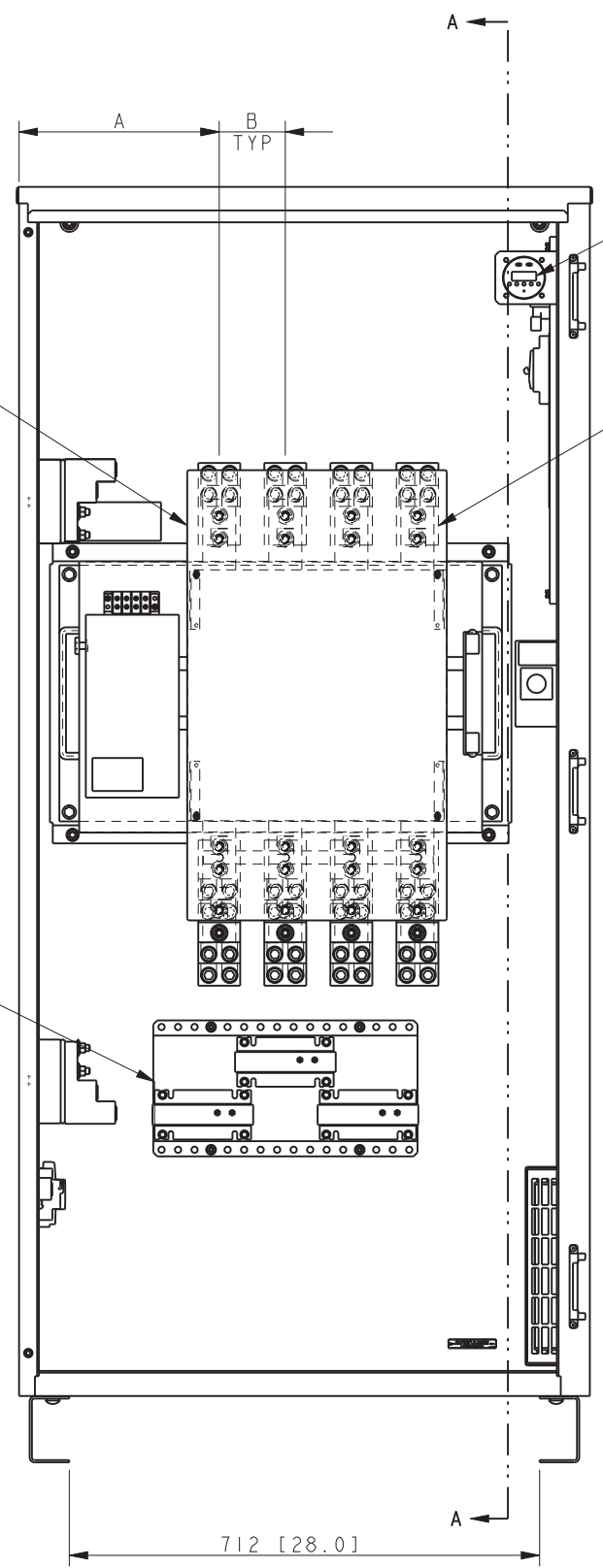
AMPERAGE	POLE	A	B
800	3	293 [11.5]	80 [3.2]
	4		
1000	3	303 [11.9]	100 [3.9]
	4		



RECOMMENDED ENTRANCE AREA
TOP & BOTTOM



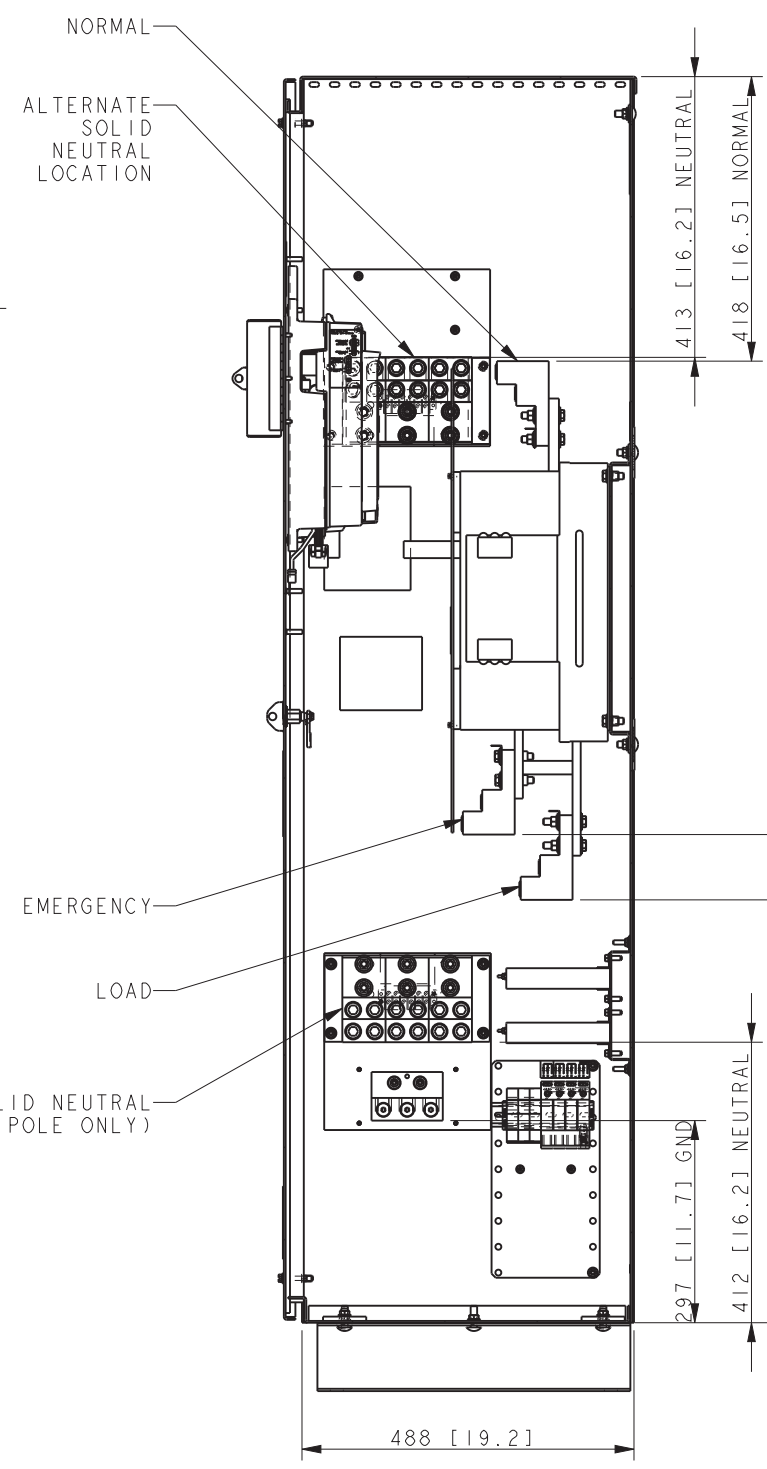
TOP VIEW
MOUNTING HOLES
SHOWN



PROGRAMMABLE EXERCISER (OPTIONAL MPAC 750 ONLY)
SWITCHED NEUTRAL (OPTIONAL)

SHIELD SHOWN IN PLACE

CURRENT SENSING (OPTIONAL WITH MPAC 1200)



SECTION A-A

NOTE: 4 POLE UNIT SHOWN.

SCREW TYPE TERMINALS FOR EXTERNAL POWER CONNECTION			
SWITCH RATING (AMPS)	RANGE OF AL-CU WIRE SIZES		
	CONTACTOR (PER PHASE)	NEUTRAL (3 POLE)	GROUND
800	(2) 1/0 - 750 KCMIL	(12) #2 - 600 KCMIL	(3) #4 - 600 KCMIL
1000	(4) #2 - 600 KCMIL		OR (6) 1/0 - 250 KCMIL

WEIGHT IN Kg [LBS]		
AMPS	3 POLE	4 POLE
800	226 [498]	236 [520]
1000	231 [509]	241 [531]

REV	DATE	REVISION	BY
-	8-23-13	NEW DRAWING [CT54441]	BTW
A	5-3-19	(B-5)(D-5) UPDATED NOTES [CT193069]	ZHK

UNLESS OTHERWISE SPECIFIED -
1) DIMENSIONS ARE IN MILLIMETERS
2) TOLERANCES ARE:
X.XX
X.X
X ANGLES
SURFACE FINISH
THIRD ANGLE PROJECTION

KOHLER CO. METRIC PRO-E
POWER SYSTEMS, KOHLER, WI 53044 U.S.A.
THIS DRAWING IN DESIGN AND DETAIL IS KOHLER CO. PROPERTY AND MUST NOT BE USED EXCEPT IN CONNECTION WITH KOHLER CO. WORK. ALL RIGHTS OF DESIGN OR INVENTION ARE RESERVED.

TITLE: DIMENSION PRINT
SCALE: CAD NO. SHEET 2 of 2
DWG NO. ADV-8592 D