

**SEISMIC MOUNTING NOTE:**

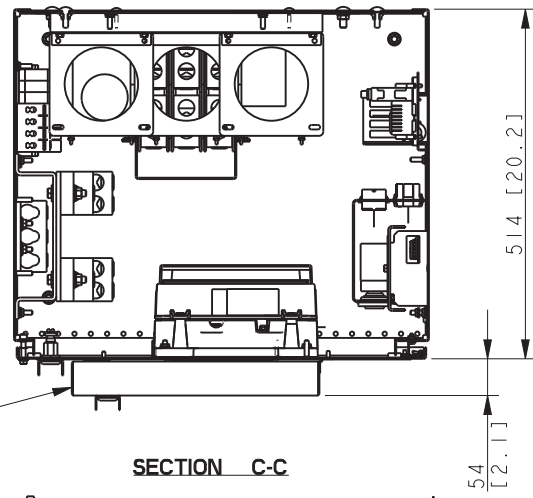
FOR SEISMIC CERTIFIED UNITS,  
MOUNT WITH THE FOLLOWING HARDWARE:

**WALL MOUNTED (STEEL)**

Ø9.53 [0.375] Dia. SAE GRADE 1/ ASTM A307 BOLTS.

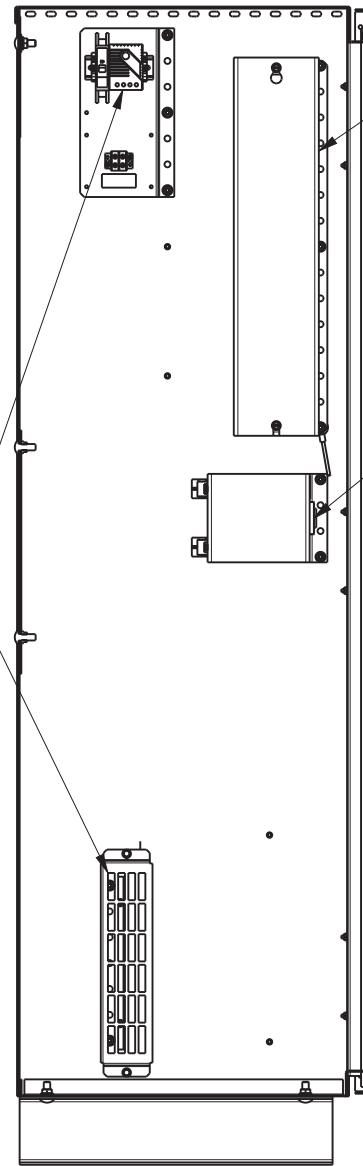
**WALL MOUNTED (CONCRETE)**

Ø9.53 [0.375] Dia. HILTI KWIK BOLT TZ-CS WITH MIN. EMBEDMENT 50.8 [2.00]; EDGE DISTANCE OF 101.6 [4.00] ON A 101.6 [4.00] THICK 4000 PSI CONCRETE WALL. HARDWARE TO COMPLY WITH SPECIFICATIONS ON ADV-7456.



SECURITY COVER  
(OPTIONAL ON NEMA 1,  
REQUIRED ON NEMA 3R)

SECTION C-C



ACCESSORY MODULE  
(OPTIONAL  
MPAC 1200  
ONLY)

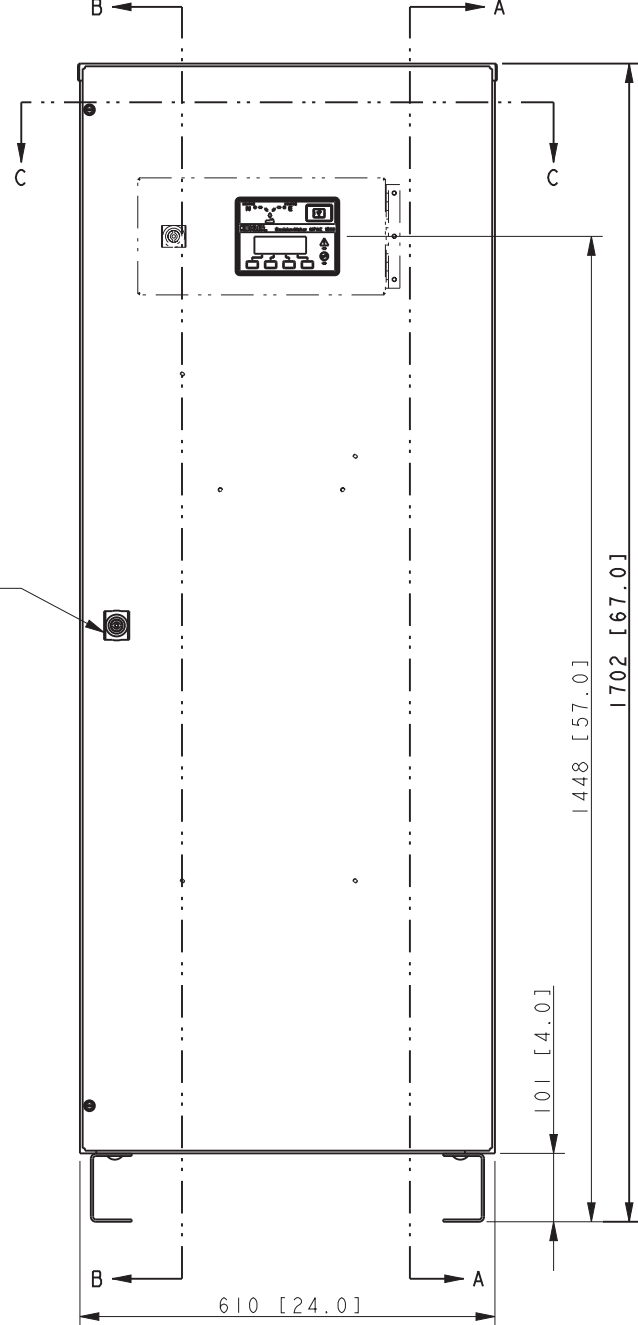
LOGIC DISCONNECT  
(OPTIONAL)

PADLOCK HASP  
(WITH SECURITY  
OPTION & NEMA 3R  
ONLY)

HEATER  
(OPTIONAL  
MPAC 1200  
ONLY)

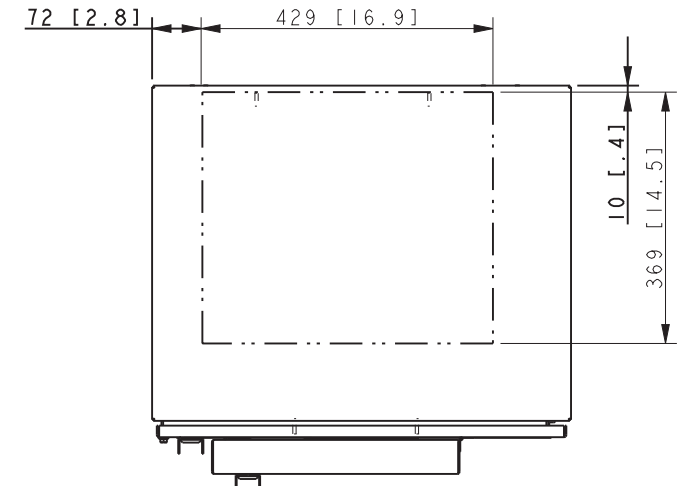
SECTION A-A

NOTE:  
ALLOW FOR MINIMUM DOOR SWING CLEARANCE  
OF 610 [24.0] IN FRONT OF CABINET.

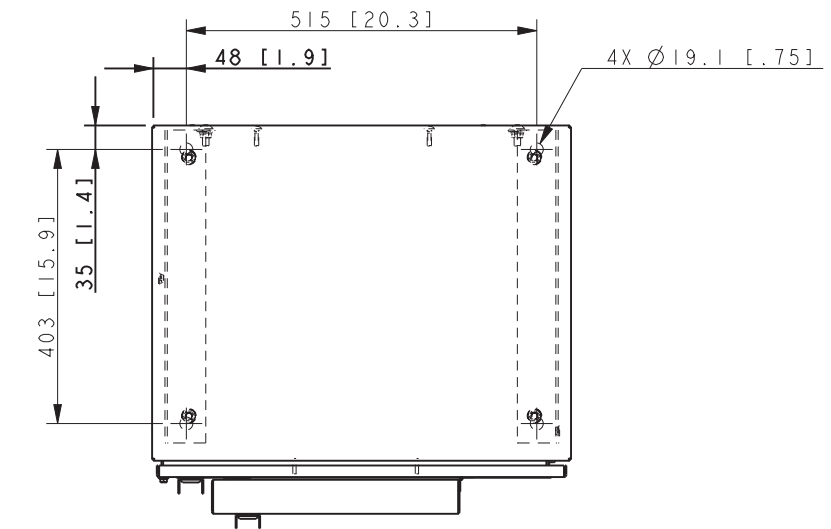


SURGE PROTECTION  
(OPTIONAL  
MPAC 1200  
ONLY)

SECTION B-B



RECOMMENDED ENTRANCE AREA  
TOP & BOTTOM



TOP VIEW  
MOUNTING HOLES  
SHOWN

NOTES:  
DIMENSIONS IN [ ] ARE INCHES.

FINISH: ANSI 49 GRAY.

REFER TO OPERATOR'S MANUAL PRIOR TO  
INSTALLATION & OPERATION OF UNIT.

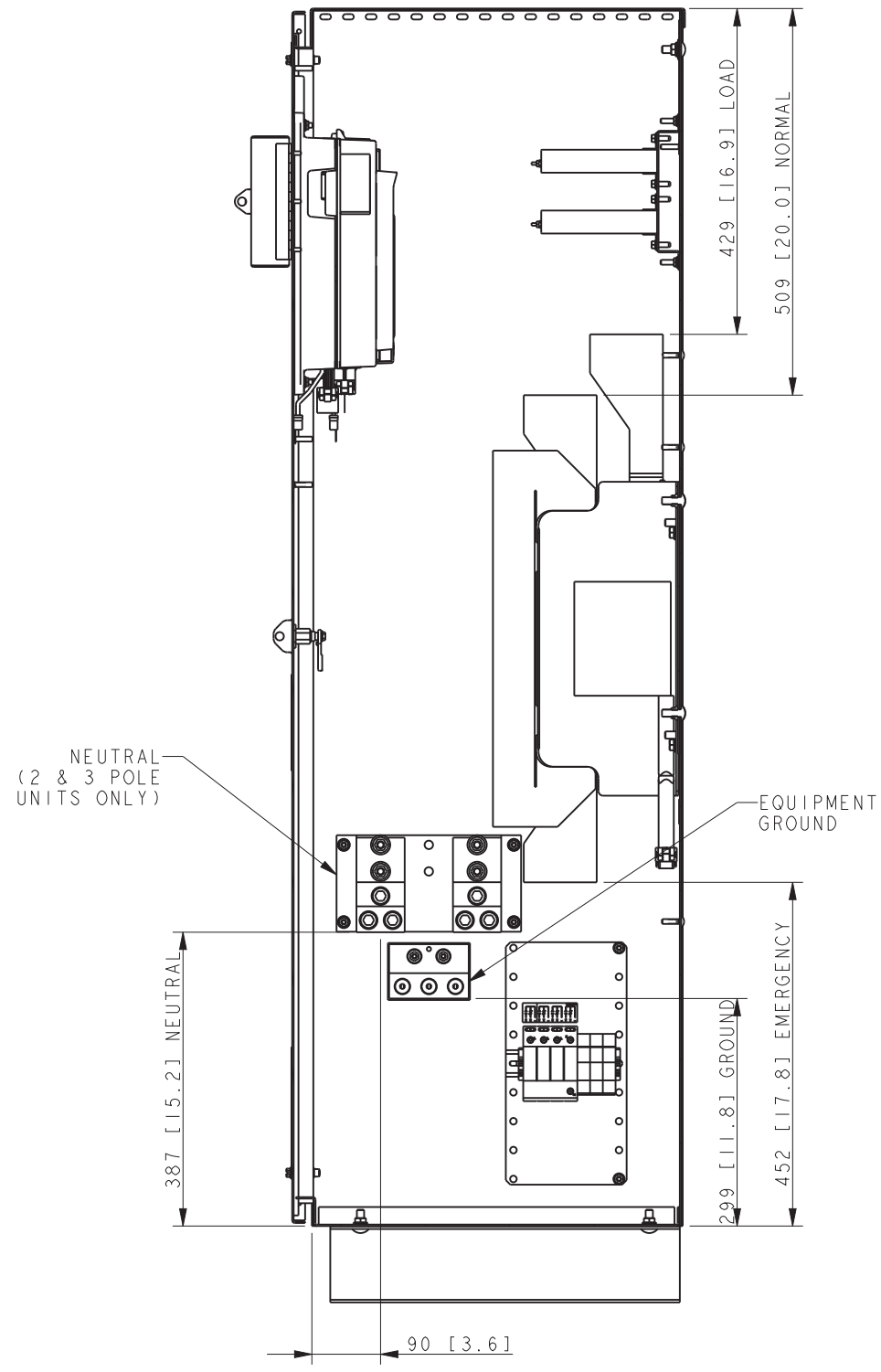
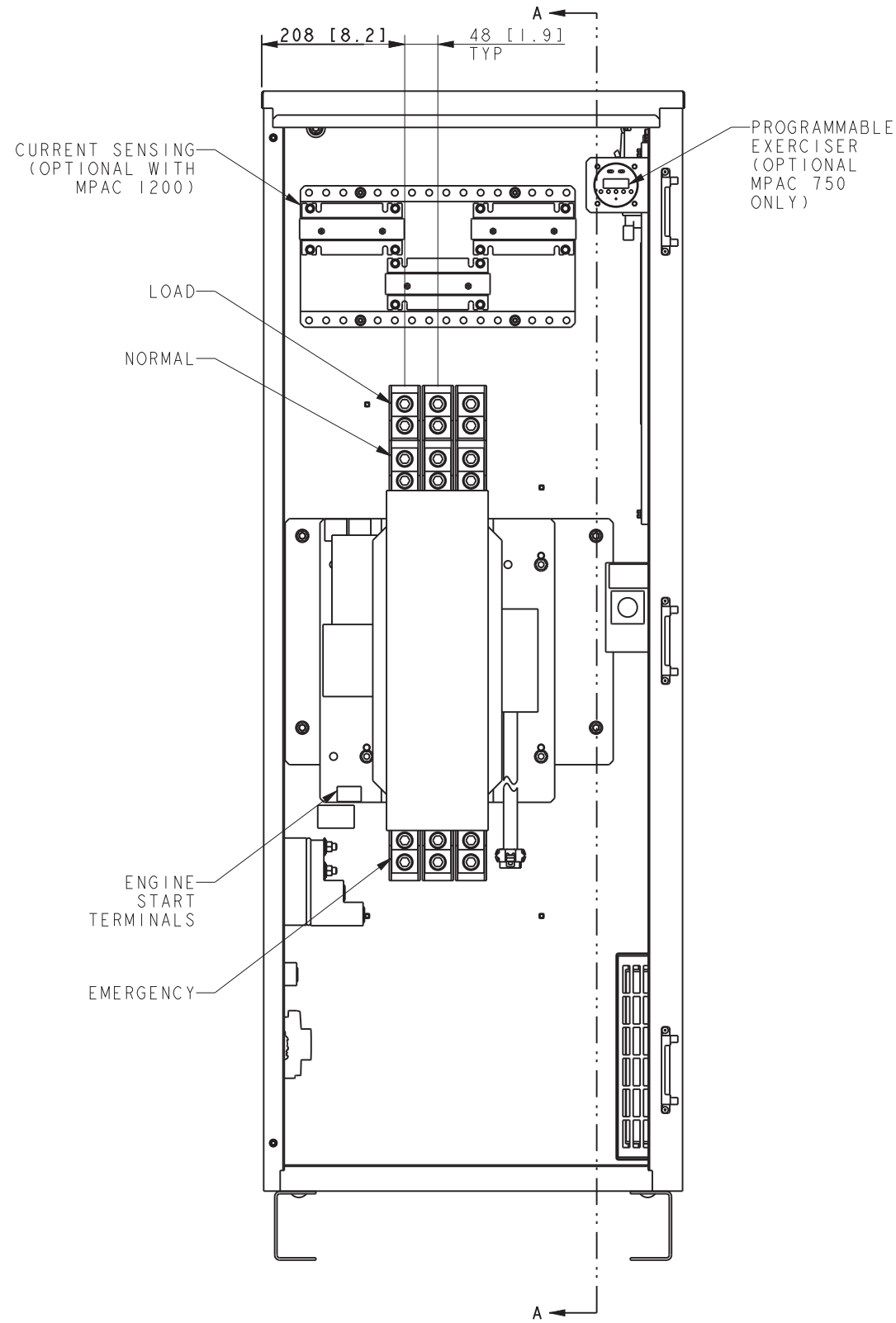
FOR SEISMIC CERTIFIED UNITS, REFER TO  
ADV-7456 AND INSTALLATION INSTRUCTIONS.

| REV | DATE    | REVISION                                    | BY  | UNLESS OTHERWISE SPECIFIED -<br>1) DIMENSIONS ARE IN MILLIMETERS<br>2) TOLERANCES ARE: |
|-----|---------|---|-----|--|
| -   | 8-22-13 | NEW DRAWING [CT54441]                       | BTW | X.XX   |
| A   | 4-22-14 | (A-5) VOLTS: 208-600 WAS 208-480; [CT78618] | BTW | X.X  |
|     |         |   |     | ANGLES   |
|     |         |   |     | SURFACE FINISH   |
|     |         |   |     | MAX.   |
|     |         |   |     | THIRD ANGLE PROJECTION   |
|     |         |   |     | APPROVALS  |
|     |         |   |     | DATE   |
|     |         |   |     | DRAWN  |
|     |         |   |     | CHECKED  |
|     |         |   |     | APPROVED   |

|  |               |              |
|--|---------------|--------------|
| <b>KOHLER CO.</b>  | <b>METRIC</b> | <b>PRO-E</b> |
| POWER SYSTEMS, KOHLER, WI 53044 U.S.A.   |               |              |
| THIS DRAWING IN DESIGN AND DETAIL IS KOHLER CO. PROPERTY AND MUST NOT BE USED EXCEPT IN CONNECTION WITH KOHLER CO. WORK. ALL RIGHTS OF DESIGN OR INVENTION ARE RESERVED. |               |              |
| TITLE  |               |              |
| <b>DIMENSION PRINT</b>   |               |              |
| SCALE .18  | CAD NO.       | SHEET 1 of 2 |
| DWG NO. <b>ADV-8590</b>  |               | <b>D</b>     |

SEE ADV-8565 FOR FULL MODEL CODE DEFINITION

| STYLE | MECHANISM | TRANSITION | MPAC LOGIC | VOLTS   | POLES   | NEUTRAL   | ENCLOSURE | AMPS | CONNECTION |
|-------|-----------|------------|------------|---------|---------|-----------|-----------|------|------------|
| KSS   | SPECIFIC  | STANDARD   | 750, 1200  | 208-600 | 2, 3, 4 | SOLID, SW | 1, 3R     | 600  | STANDARD   |



SECTION A-A

| SCREW TYPE TERMINALS FOR EXTERNAL POWER CONNECTION |                           |                      |                                       |
|--|---------------------------|----------------------|---------------------------------------|
| SWITCH RATING (AMPS)                               | RANGE OF AL-CU WIRE SIZES |                      |                                       |
|  | CONTACTOR (PER PHASE)     | NEUTRAL (2 & 3 POLE) | GROUND                                |
| 600  | (2) #2 TO 600 KCMIL       | (6) #2 TO 600 KCMIL  | (3) #4-600 KCMIL OR (6) 1/0-250 KCMIL |

| WEIGHTS KG (LBS) |            |
|------------------|------------|
| 2 POLE           | 3 & 4 POLE |
| 179 (395)        | 183 (403)  |

| REV | DATE    | REVISION              | BY  |
|-----|---------|-----------------------|-----|
| -   | 8-20-13 | NEW DRAWING [CT54441] | BTW |
| A   | 4-22-14 | SEE SHEET 1 [CT78618] | BTW |

UNLESS OTHERWISE SPECIFIED -  
1) DIMENSIONS ARE IN MILLIMETERS  
2) TOLERANCES ARE:  
X.XX  
X.X  
X

APPROVALS DATE  
DRAWN BTW 8-20-13  
CHECKED BTW 8-20-13  
APPROVED MTL 8-20-13

THIRD ANGLE PROJECTION

SURFACE FINISH  
MAX.

**KOHLER CO. METRIC PRO-E**  
POWER SYSTEMS, KOHLER, WI 53044 U.S.A.  
THIS DRAWING IN DESIGN AND DETAIL IS KOHLER CO. PROPERTY AND MUST NOT BE USED EXCEPT IN CONNECTION WITH KOHLER CO. WORK. ALL RIGHTS OF DESIGN OR INVENTION ARE RESERVED.

TITLE  
**DIMENSION PRINT**

SCALE .22 CAD NO. SHEET 2 of 2  
DWG NO. **ADV-8590**