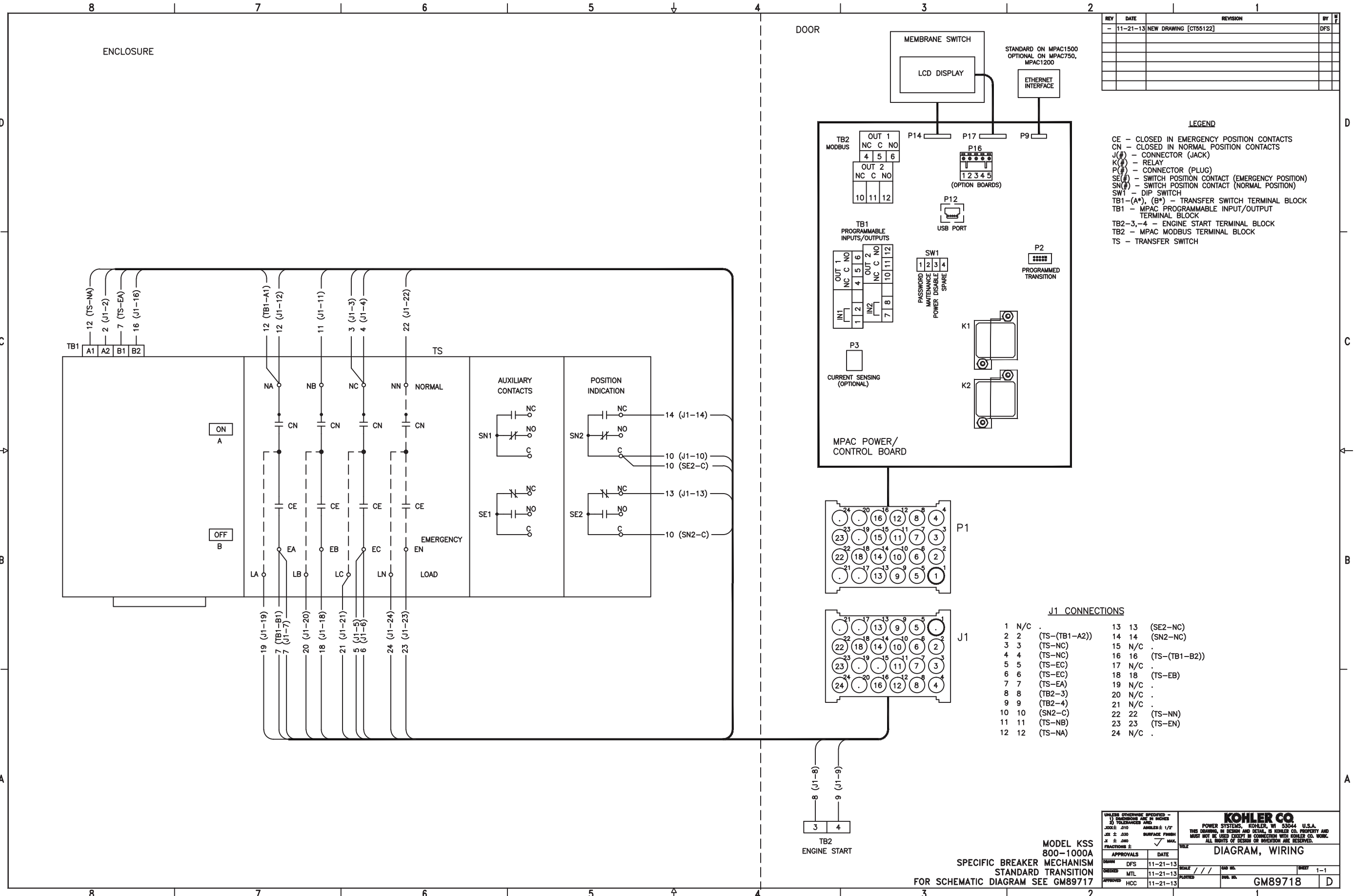


| REV | DATE | REVISION | BY | APP |
|-----|----------|-----------------------|-----|-----|
| - | 11-21-13 | NEW DRAWING [CT55122] | DFS | |
| | | | | |
| | | | | |
| | | | | |
| | | | | |

LEGEND

CE - CLOSED IN EMERGENCY POSITION CONTACTS
 CN - CLOSED IN NORMAL POSITION CONTACTS
 J(#)- CONNEXOR (JACK)
 K(#)- RELAY
 P(#)- CONNEXOR (PLUG)
 SE(#)- SWITCH POSITION CONTACT (EMERGENCY POSITION)
 SN(#)- SWITCH POSITION CONTACT (NORMAL POSITION)
 SW1 - DIP SWITCH
 TB1-(A*), (B*) - TRANSFER SWITCH TERMINAL BLOCK
 TB1 - MPAC PROGRAMMABLE INPUT/OUTPUT TERMINAL BLOCK
 TB2-3,-4 - ENGINE START TERMINAL BLOCK
 TB2 - MPAC MODBUS TERMINAL BLOCK
 TS - TRANSFER SWITCH



J1 CONNECTIONS

| | | | |
|----|-----------------|----|------------------|
| 1 | N/C | 13 | 13 (SE2-NC) |
| 2 | 2 (TS-(TB1-A2)) | 14 | 14 (SN2-NC) |
| 3 | 3 (TS-NC) | 15 | N/C |
| 4 | 4 (TS-NC) | 16 | 16 (TS-(TB1-B2)) |
| 5 | 5 (TS-EC) | 17 | N/C |
| 6 | 6 (TS-EC) | 18 | 18 (TS-EB) |
| 7 | 7 (TS-EA) | 19 | N/C |
| 8 | 8 (TB2-3) | 20 | N/C |
| 9 | 9 (TB2-4) | 21 | N/C |
| 10 | 10 (SN2-C) | 22 | 22 (TS-NN) |
| 11 | 11 (TS-NB) | 23 | 23 (TS-EN) |
| 12 | 12 (TS-NA) | 24 | N/C |

| APPROVALS | DATE | SCALE | SHEET |
|--------------|----------|-------|-------|
| DESIGN DFS | 11-21-13 | /// | 1-1 |
| DRAWING MTL | 11-21-13 | | |
| APPROVED HCC | 11-21-13 | | |

MODEL KSS 800-1000A
SPECIFIC BREAKER MECHANISM
STANDARD TRANSITION
FOR SCHEMATIC DIAGRAM SEE GM89717

UNLESS OTHERWISE SPECIFIED -
 1) DIMENSIONS ARE IN INCHES
 2) TOLERANCES ARE:
 FRACTIONS ± .005
 DECIMALS ± .010
 ANGLES ± 1/2°
 SURFACE FINISH
 AS SHOWN

KOHLER CO.
 POWER SYSTEMS, KOHLER, WI 53044 U.S.A.
 THIS DRAWING, IN DESIGN AND DETAIL, IS KOHLER CO. PROPERTY AND
 MUST NOT BE USED EXCEPT IN CONNECTION WITH KOHLER CO. WORK.
 ALL RIGHTS OF DESIGN OR INVENTION ARE RESERVED.

DIAGRAM, WIRING

DWG. NO. **GM89718**