

SEISMIC MOUNTING NOTE:

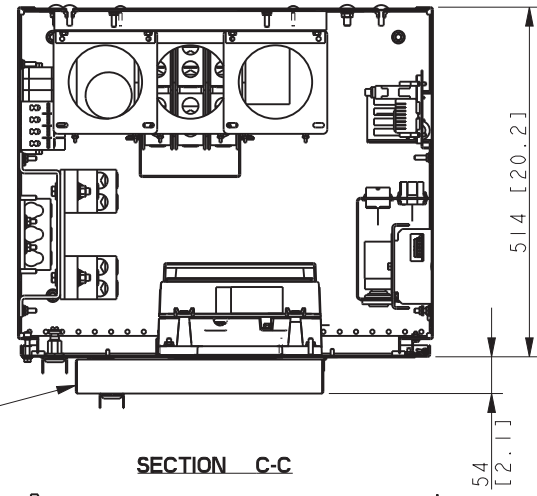
FOR SEISMIC CERTIFIED UNITS,
MOUNT WITH THE FOLLOWING HARDWARE:

WALL MOUNTED (STEEL)

Ø9.53 [0.375] Dia. SAE GRADE 1/ ASTM A307 BOLTS.

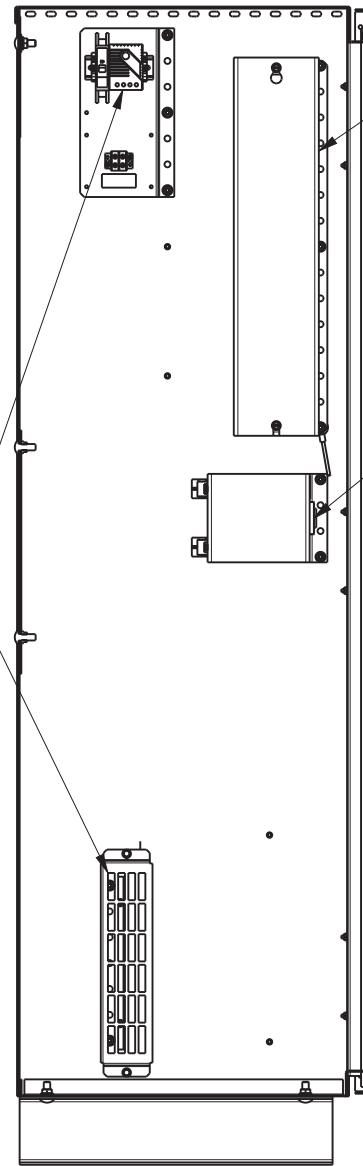
WALL MOUNTED (CONCRETE)

Ø9.53 [0.375] Dia. HILTI KWIK BOLT TZ-CS WITH MIN. EMBEDMENT 50.8 [2.00]; EDGE DISTANCE OF 101.6 [4.00] ON A 101.6 [4.00] THICK 4000 PSI CONCRETE WALL. HARDWARE TO COMPLY WITH SPECIFICATIONS ON ADV-7456.



SECURITY COVER
(OPTIONAL ON NEMA 1,
REQUIRED ON NEMA 3R)

SECTION C-C



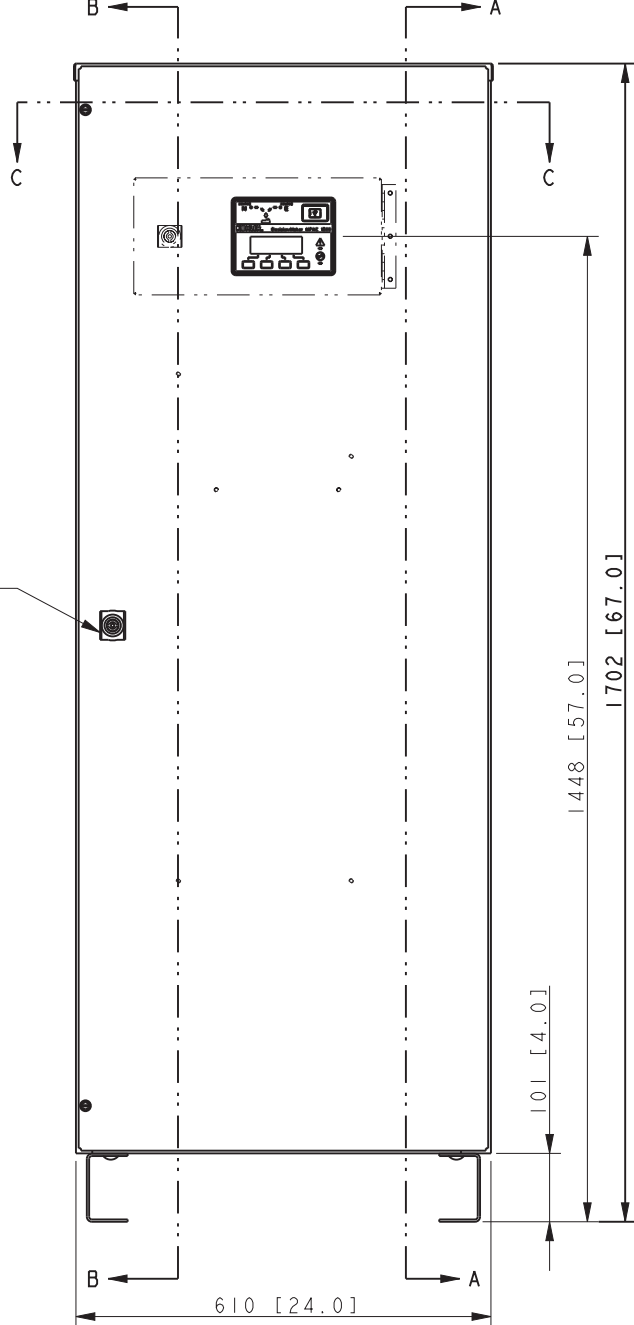
SECTION A-A

HEATER
(OPTIONAL
MPAC 1200
ONLY)

ACCESSORY MODULE
(OPTIONAL
MPAC 1200
ONLY)

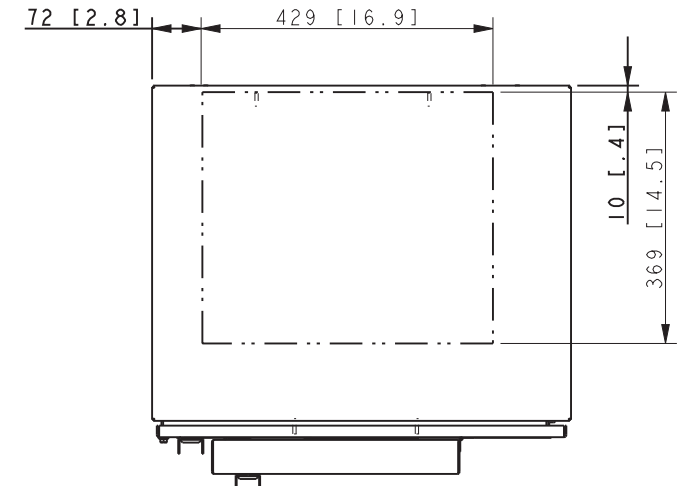
LOGIC DISCONNECT
(OPTIONAL)

PADLOCK HASP
(WITH SECURITY
OPTION & NEMA 3R
ONLY)

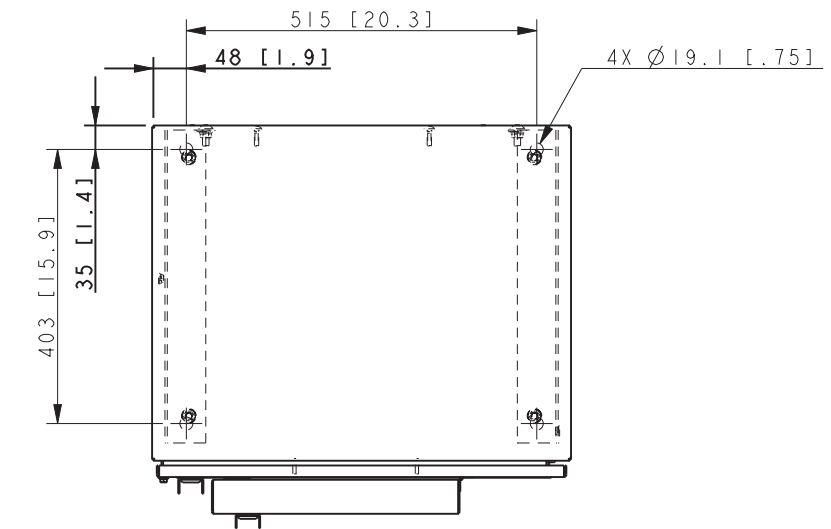


SECTION B-B

SURGE PROTECTION
(OPTIONAL
MPAC 1200
ONLY)



RECOMMENDED ENTRANCE AREA
TOP & BOTTOM



TOP VIEW
MOUNTING HOLES
SHOWN

NOTES:
DIMENSIONS IN [] ARE INCHES.

FINISH: ANSI 49 GRAY.

REFER TO OPERATOR'S MANUAL PRIOR TO
INSTALLATION & OPERATION OF UNIT.

FOR SEISMIC CERTIFIED UNITS, REFER TO
ADV-7456 AND INSTALLATION INSTRUCTIONS.

NOTE:
ALLOW FOR MINIMUM DOOR SWING CLEARANCE
OF 610 [24.0] IN FRONT OF CABINET.

SEE ADV-8565 FOR FULL MODEL CODE DEFINITION

| STYLE | MECHANISM | TRANSITION | MPAC LOGIC | VOLTS | POLES | NEUTRAL | ENCLOSURE | AMPS | CONNECTION |
|-------|-----------|------------|------------|---------|---------|-----------|-----------|------|------------|
| KSS | SPECIFIC | STANDARD | 750, 1200 | 208-600 | 2, 3, 4 | SOLID, SW | 1, 3R | 600 | STANDARD |

| REV | DATE | REVISION | BY |
|-----|---------|---|-----|
| - | 8-22-13 | NEW DRAWING [CT54441] | BTW |
| A | 4-22-14 | (A-5) VOLTS: 208-600 WAS 208-480; [CT78618] | BTW |

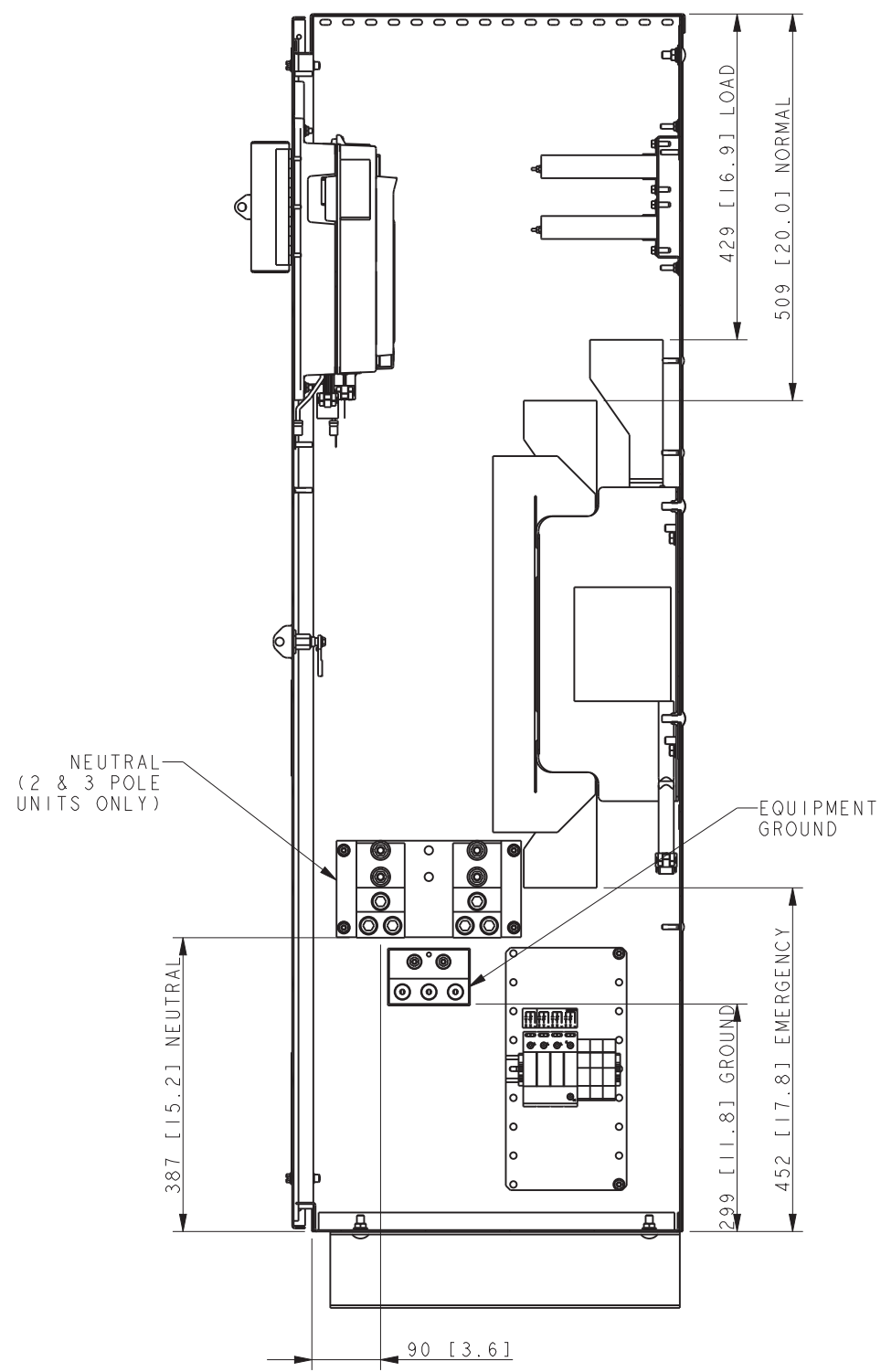
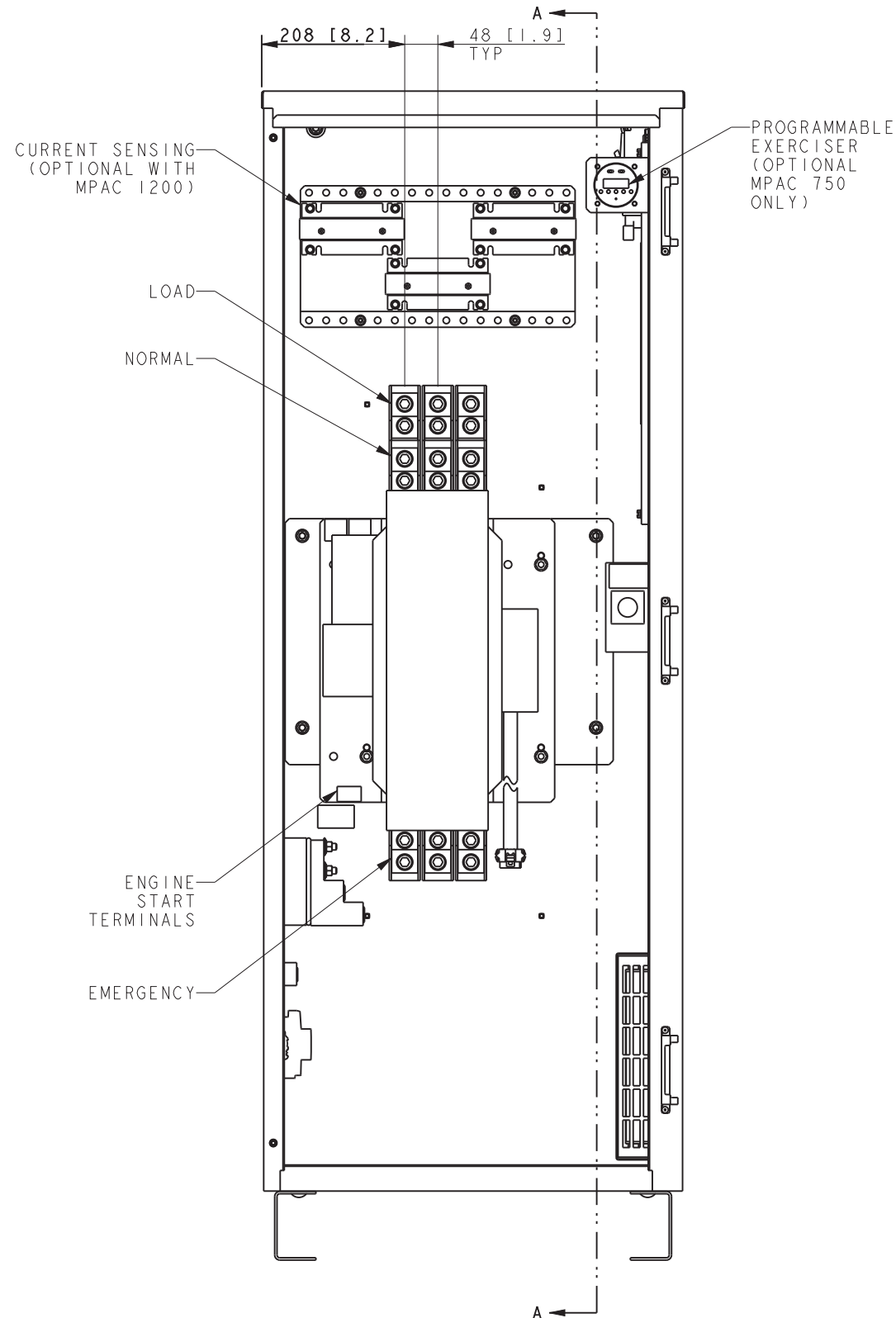
UNLESS OTHERWISE SPECIFIED -
1) DIMENSIONS ARE IN MILLIMETERS
2) TOLERANCES ARE:
X.XX
X.X
ANGLES
THIRD ANGLE PROJECTION

APPROVALS DATE
DRAWN BTW 8-22-13
CHECKED BTW 8-22-13
APPROVED MTL 8-22-13

SURFACE FINISH
MAX.

| TITLE | |
|-------------------|--------------|
| DIMENSION PRINT | |
| SCALE .18 CAD NO. | SHEET 1 of 2 |
| ADV-8590 | |
| D | |

KOHLER CO. METRIC PRO-E
POWER SYSTEMS, KOHLER, WI 53044 U.S.A.
THIS DRAWING IN DESIGN AND DETAIL IS KOHLER CO. PROPERTY AND MUST NOT BE USED EXCEPT IN CONNECTION WITH KOHLER CO. WORK. ALL RIGHTS OF DESIGN OR INVENTION ARE RESERVED.



SECTION A-A

SCREW TYPE TERMINALS
FOR EXTERNAL POWER CONNECTION

| SWITCH RATING (AMPS) | RANGE OF AL-CU WIRE SIZES | | |
|-------------------------|------------------------------|----------------------|--|
| | CONTACTOR (PER PHASE) | NEUTRAL (2 & 3 POLE) | GROUND |
| 600 | (2) #2 TO 600 KCMIL | (6) #2 TO 600 KCMIL | (3) #4-600 KCMIL OR (6) 1/0-250 KCMIL |

| WEIGHTS KG (LBS) | |
|------------------|------------|
| 2 POLE | 3 & 4 POLE |
| 179 (395) | 183 (403) |

| REV | DATE | REVISION | BY |
|-----|---------|-----------------------|-----|
| - | 8-20-13 | NEW DRAWING [CT54441] | BTW |
| A | 4-22-14 | SEE SHEET 1 [CT78618] | BTW |

| | | |
|--|-----------|---------|
| UNLESS OTHERWISE SPECIFIED - 1) DIMENSIONS ARE IN MILLIMETERS 2) TOLERANCES ARE: X.XX X.X X | APPROVALS | DATE |
| THIRD ANGLE PROJECTION | BTW | 8-20-13 |
| SURFACE FINISH MAX. | CHECKED | 8-20-13 |
| | APPROVED | 8-20-13 |

KOHLER CO. METRIC PRO-E
POWER SYSTEMS, KOHLER, WI 53044 U.S.A.
THIS DRAWING IN DESIGN AND DETAIL IS KOHLER CO.
PROPERTY AND MUST NOT BE USED EXCEPT IN
CONNECTION WITH KOHLER CO. WORK. ALL RIGHTS OF
DESIGN OR INVENTION ARE RESERVED.

TITLE: **DIMENSION PRINT**

SCALE: .22 CAD NO. SHEET 2 of 2
DWG NO. **ADV-8590**