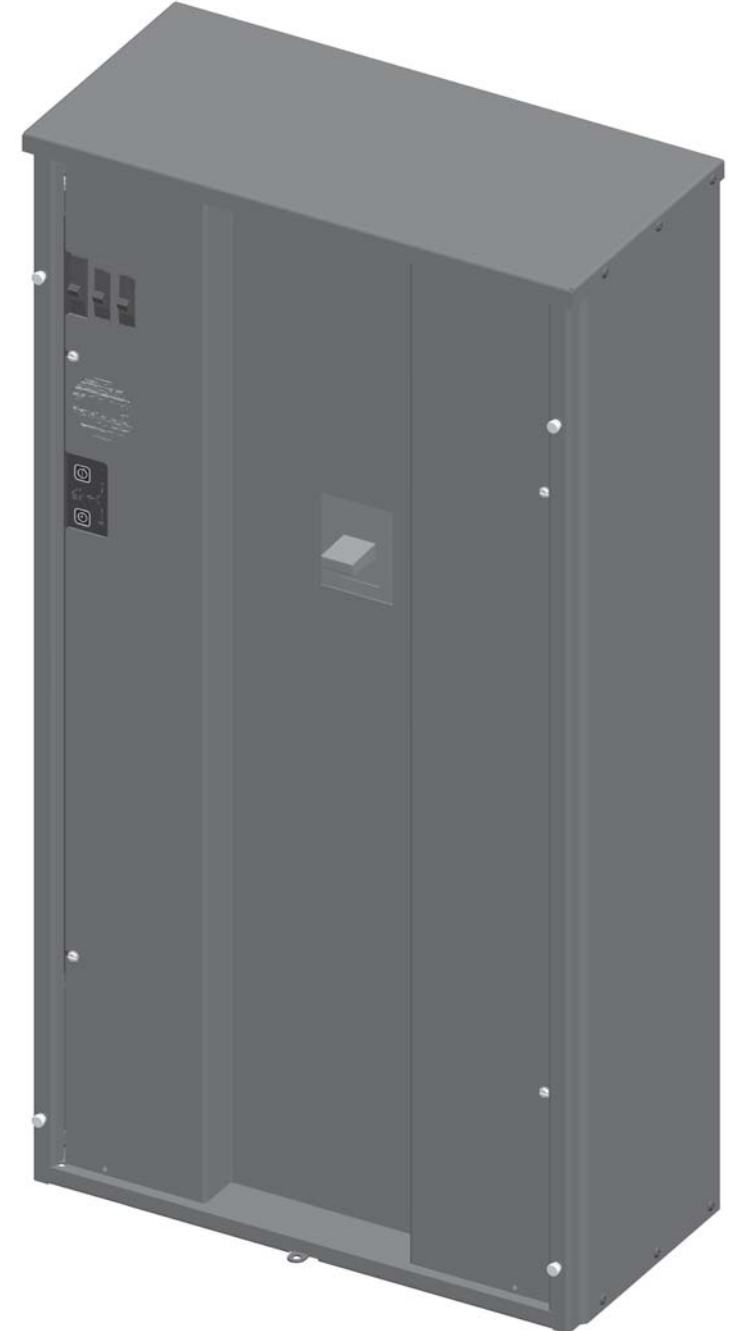
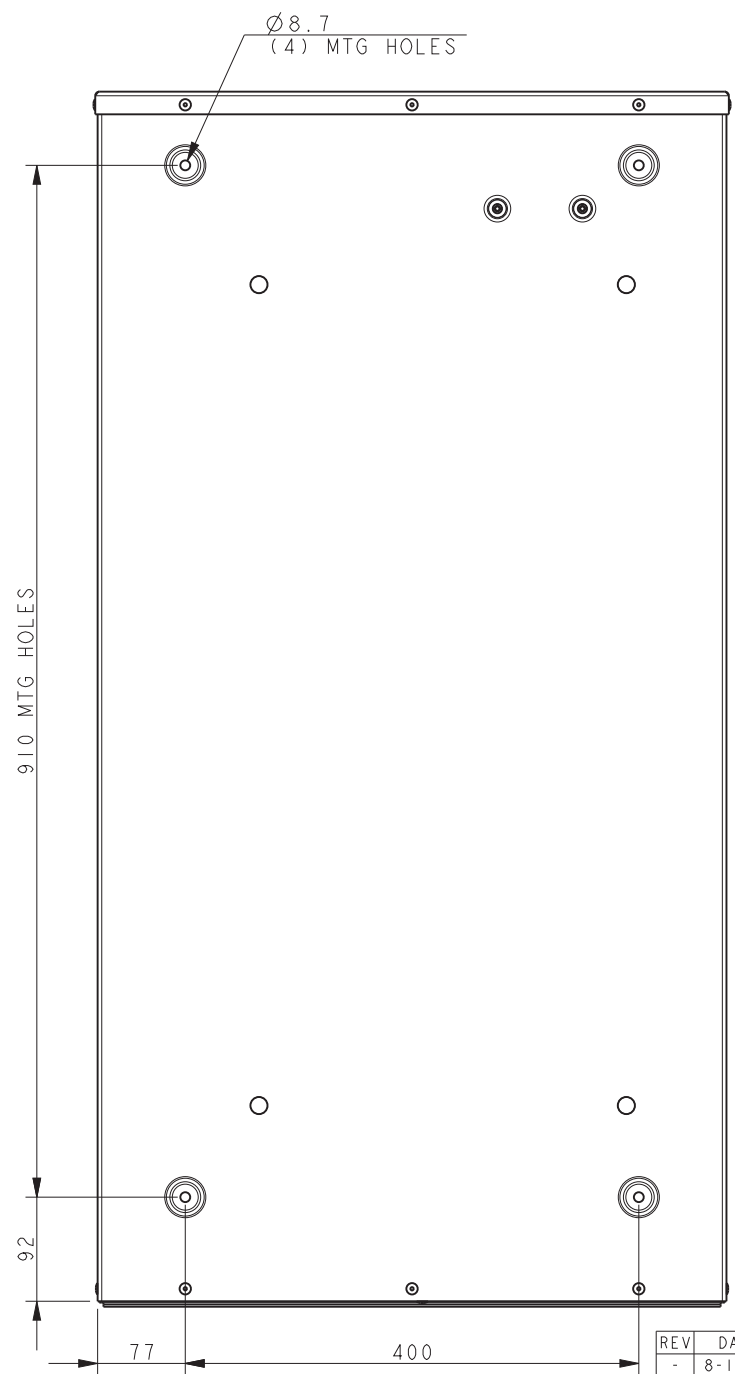
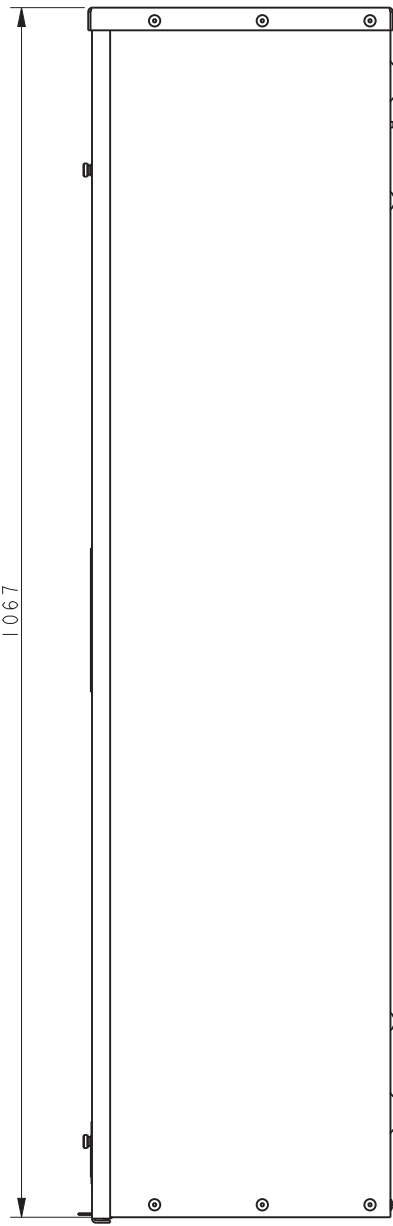
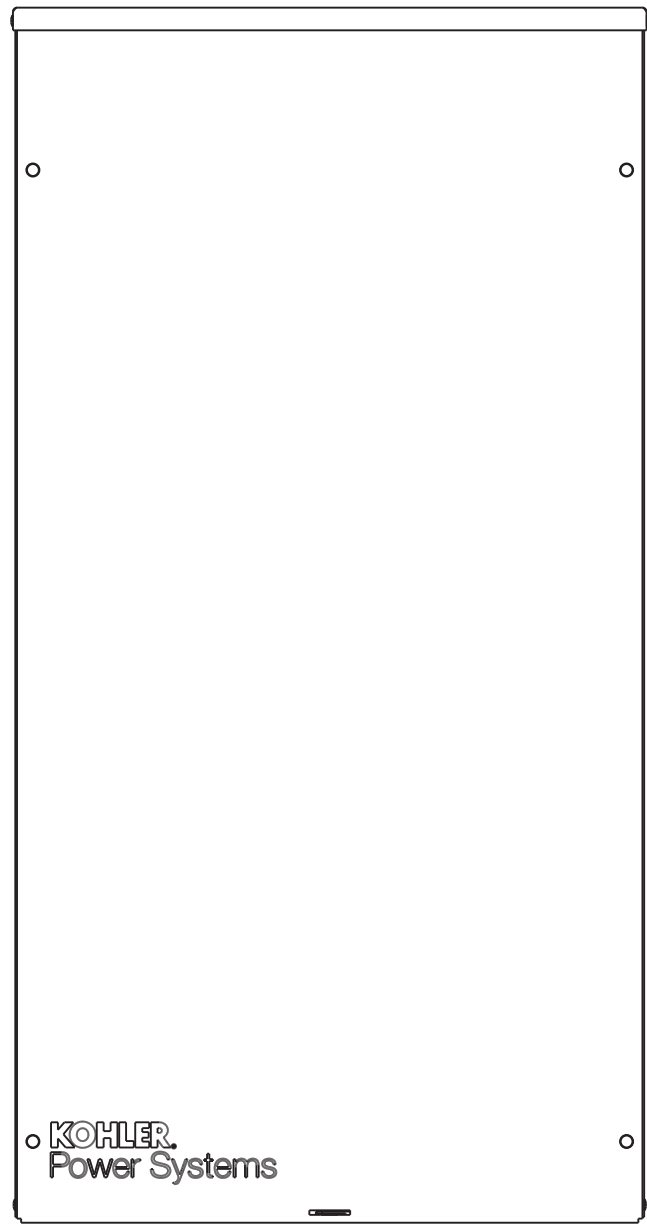


PADLOCK HASP



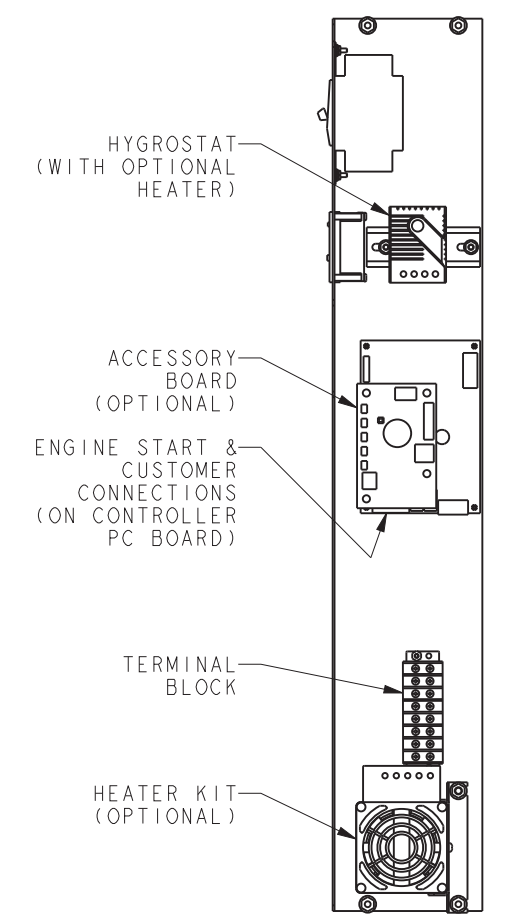
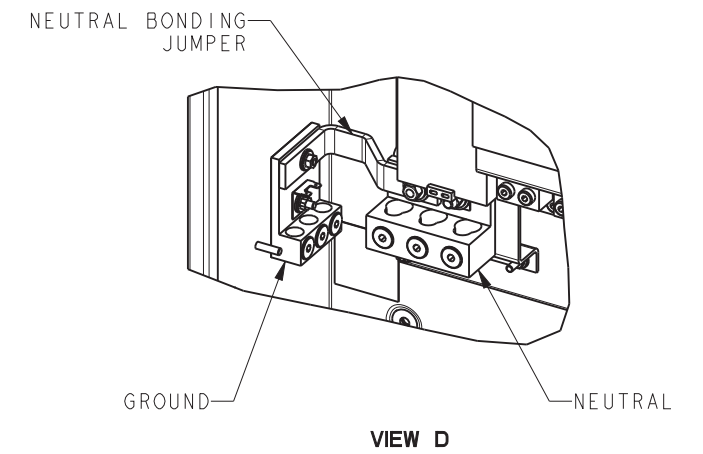
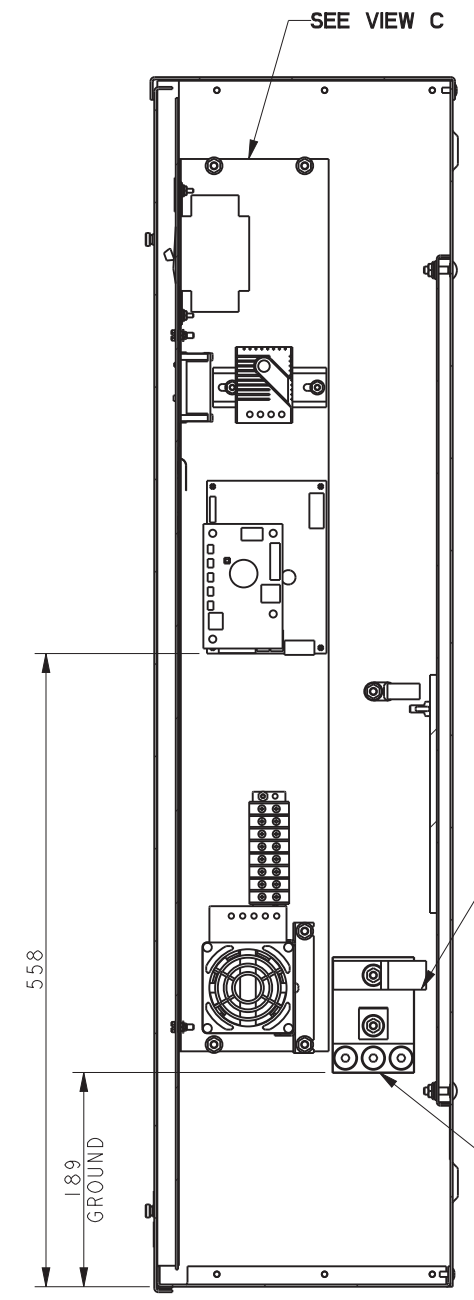
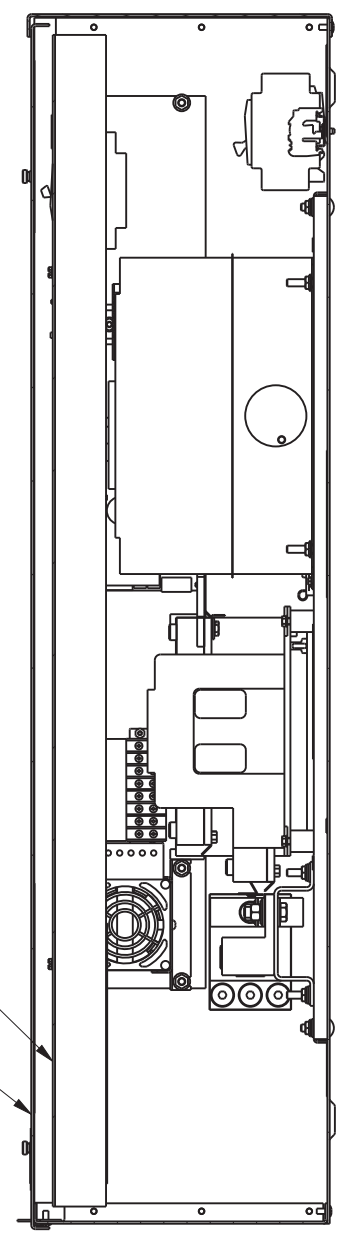
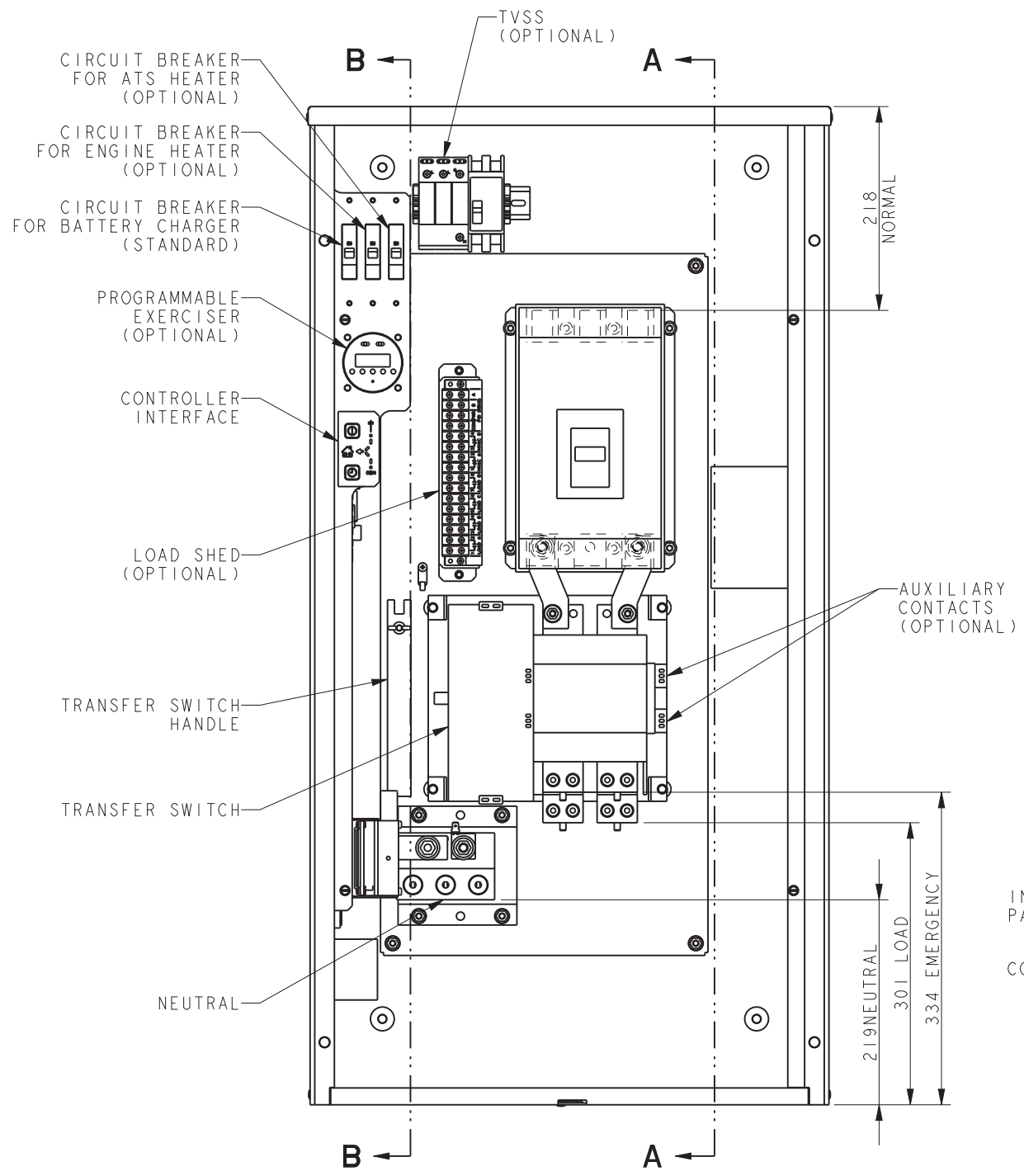
NOTES:
 DIMENSIONS IN [] ARE INCHES.
 FINISH: ANSI 49 GRAY.
 REFER TO OPERATOR'S MANUAL PRIOR TO INSTALLATION AND OPERATION OF UNIT.
 POWER CABLES AND CONTROL WIRING MUST BE RUN IN METAL CONDUIT
 APPROXIMATE WEIGHT: 46 Kg (101 LBS.)
 SERVICE DISCONNECT BREAKER IS 400A, 80% REATED. CONTINUOUS LOAD CURRENT IS NOT TO EXCEED 80% OF BREAKER RATING.

MODEL R
 MPAC 500
 400A 240V
 SERVICE ENTRANCE
 NEMA 3R

REV	DATE	ON COMPOSITE DWGS. SEE PART NO. FOR REVISION LEVEL	BY	UNLESS OTHERWISE SPECIFIED - 1) DIMENSIONS ARE IN MILLIMETERS 2) TOLERANCES ARE:
-	8-17-11	NEW DRAWING [90714-4]	BTW	X.XX ± 0.25
A	3-11-13	SEE SHEET 2 [CT40695]	BTW	X.X ± 1.0
B	7-16-13	SEE SHEET 2 [CT48126]	BTW	X ± 1.5
C	1-9-15	SEE SHEET 2 [CT103061]	BTW	ANGLES ± 0° 30' MAX.

KOHLER CO. METRIC PRO-E	
POWER SYSTEMS, KOHLER, WI 53044 U.S.A.	
THIS DRAWING IN DESIGN AND DETAIL IS KOHLER CO. PROPERTY AND MUST NOT BE USED EXCEPT IN CONNECTION WITH KOHLER CO. WORK. ALL RIGHTS OF DESIGN OR INVENTION ARE RESERVED.	
TITLE: DIMENSION PRINT	
SCALE: 0.30	CAD NO. SHEET 1 of 2
DWG NO. ADV-8445 D	

APPROVALS	DATE
DRAWN BTW	8-17-11
CHECKED BTW	8-17-11
APPROVED MTL	8-17-11



COVER & INNER PANEL REMOVED TO SHOW DETAIL

SWITCH RATING (AMPS)	SCREW TYPE TERMINALS FOR EXTERNAL POWER CONNECTION			
	RANGE OF AL-CU WIRE SIZES			
	NORMAL (PER PHASE)	EMERGENCY & LOAD (PER PHASE)	NEUTRAL	GROUND
400	(2) 1 AWG TO 250 KCMIL (1) 1 AWG TO 600 KCMIL	(2) #6 TO 250 KCMIL	(6) 1/0 TO 250 KCMIL (3) 4 TO 600 KCMIL	(3) #6 TO 3/0 AWG

MODEL R
MPAC 500
400A 240V
SERVICE ENTRANCE
NEMA 3R

REV	DATE	ON COMPOSITE DWGS. SEE PART NO. FOR REVISION LEVEL	BY
-	8-17-11	NEW DRAWING [90714-4]	BTW
A	3-11-13	(A-8, -6) POWER CONNECTION CHART UPDATED; [CT40695]	BTW
B	7-16-13	(C-7) LOAD SHED OPTION SHOWN; [CT48126]	BTW
C	1-9-15	(A-7) (2) #6 TO 250 KCMIL WAS (2) 1/0 TO 250 KCMIL, (1) 4 TO 600 KCMIL REMOVED; (A-8) (1) 1 AWG TO 600 KCMIL ADDED, (2) 1 AWG TO 250 KCMIL WAS (2) 3/0 TO 250 KCMIL; [CT103061]	BTW

UNLESS OTHERWISE SPECIFIED - 1) DIMENSIONS ARE IN MILLIMETERS 2) TOLERANCES ARE: X.XX ± 0.25 X.X ± 1.0 X ± 1.5 ANGLES ± 0° 30' MAX.		KOHLER CO. METRIC PRO-E POWER SYSTEMS, KOHLER, WI 53044 U.S.A. THIS DRAWING IN DESIGN AND DETAIL IS KOHLER CO. PROPERTY AND MUST NOT BE USED EXCEPT IN CONNECTION WITH KOHLER CO. WORK. ALL RIGHTS OF DESIGN OR INVENTION ARE RESERVED.
APPROVALS	DATE	
DRAWN	BTW	8-17-11
CHECKED	BTW	8-17-11
APPROVED	MTL	8-17-11
TITLE		DIMENSION PRINT
SCALE	0.30	CAD NO.
DWG NO.	ADV-8445	
SHEET		2 of 2