

## ASCO's New QR Code and Its Capabilities

ASCO Power Technologies is applying QR Codes (Quick Response Codes) to its entire transfer switch portfolio. The new unit-specific Identification Label now includes: (1) a list of applied accessories (2) a QR code that is linked to the serial number of each device, (3) an overview of related service offers. Scanning this code with an internet-connected cell phone or tablet enables a user to access device-specific records.



The new ASCO Identification Label with QR Code



Any QR code reader can be used to access basic serial number-linked information about a transfer switch.

### How Does It Work? Scan 1 of 2 Ways.

1. Scan with any standard QR code reader, to access:

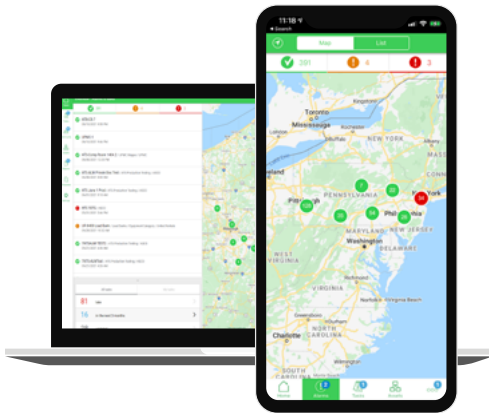
- Product Brochures
- Manuals for transfer switches, their controls, and accessories
- Unit-specific outline and mounting drawings
- Unit-specific wiring diagrams

2. Scan using Facility Expert Application to access:

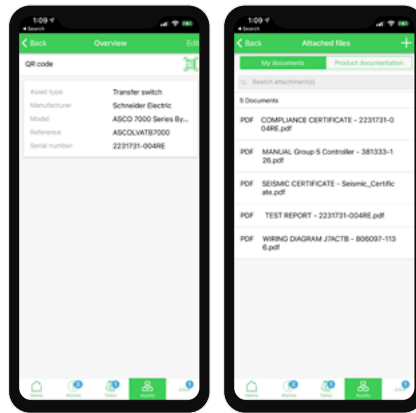
- All the documents from the standard QR code scan PLUS:
- Factory Test Reports
  - Certificate of Compliance
  - Seismic Certification
  - Any user-uploaded documents
  - Asset management capabilities

**NEVER LOSE DOCUMENTS AGAIN... ACCESS WHENEVER AND WHEREVER YOU NEED THEM**

Using the Facility Expert App enables users to maintain records about the operation, maintenance, and servicing of ASCO products. App users can:



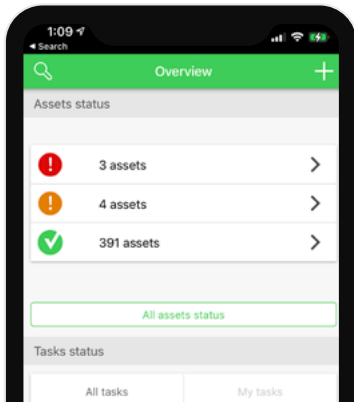
Geotag and track assets at multiple sites



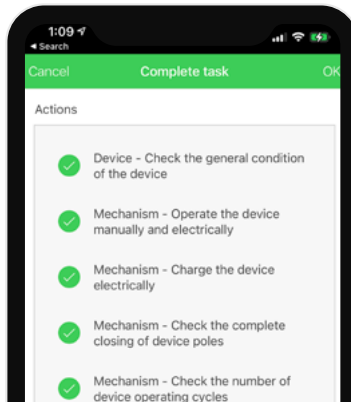
Access asset details, documentation, and drawings



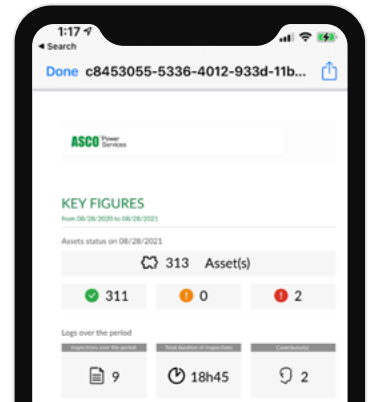
Create user communities for better collaboration



Log and track incidents and maintenance



Create digital inspection checklists

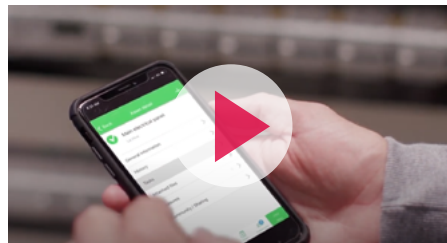


Generate automated summary and activity reports

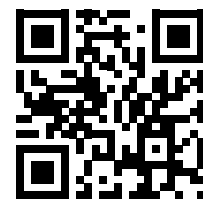
Watch an Introduction to Facility Expert



See Facility Expert User Benefits



Get started



Scan the QR code to download Facility Expert:



Download for iOS



Download for Android

Say goodbye to paper documents! With robust, QR-coded ASCO ATS, users can access digital documents, drawings, and equipment life-cycle information from a central repository ... anytime ... anywhere.