

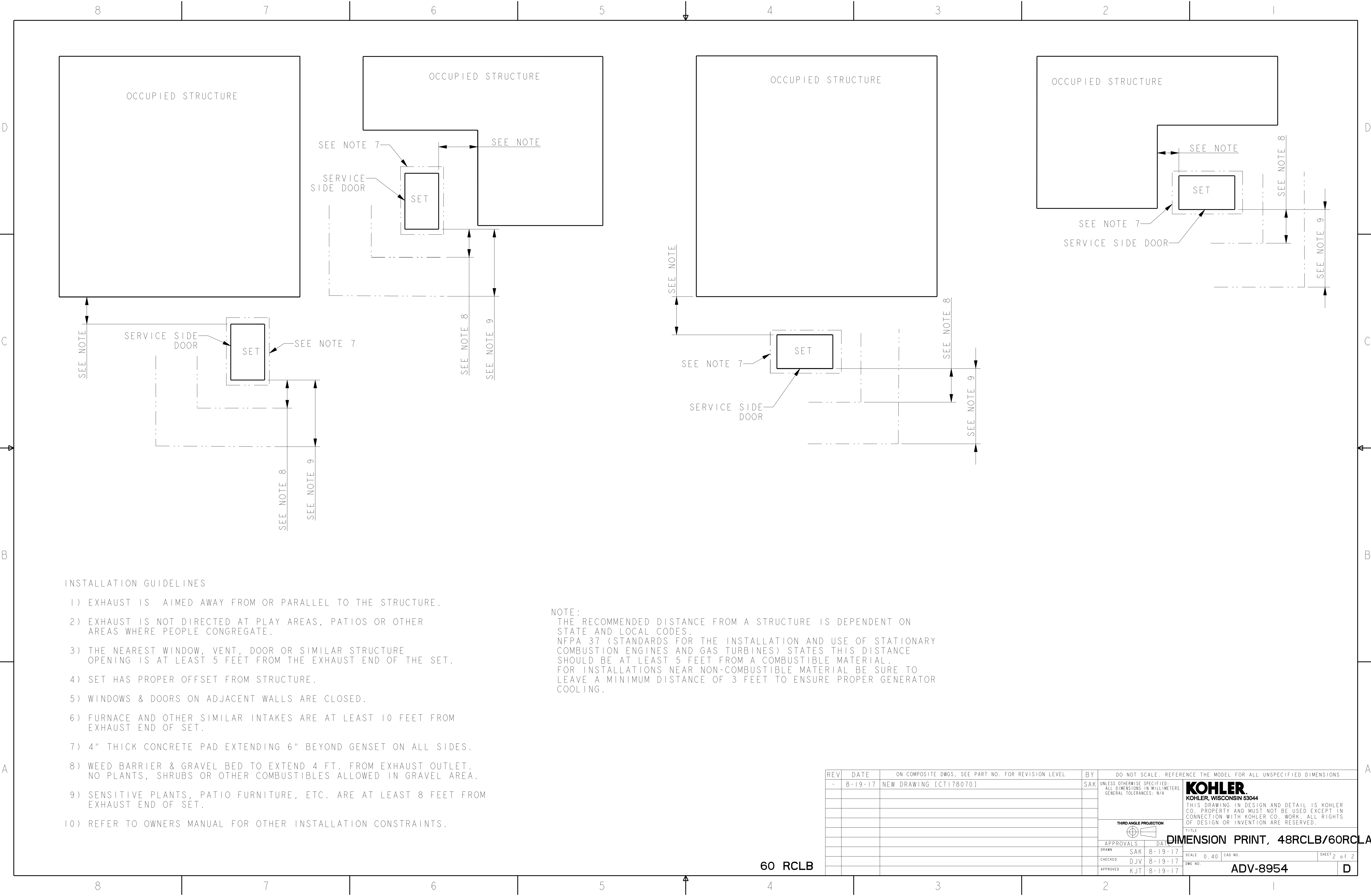


NOTE:
DIMENSIONS IN [] ARE ENGLISH
STANDARD EQUIVALENTS

| | | | | | | | |
|-----|---------|--|-----|--|--|--|---------|
| REV | DATE | ON COMPOSITE DWGS, SEE PART NO. FOR REVISION LEVEL | BY | DO NOT SCALE. REFERENCE THE MODEL FOR ALL UNSPECIFIED DIMENSIONS | | | |
| - | 8-19-17 | NEW DRAWING [CTI78070] | SAK | UNLESS OTHERWISE SPECIFIED: ALL DIMENSIONS IN MILLIMETERS GENERAL TOLERANCES: N/A | |  KOHLER, WISCONSIN 53044 THIS DRAWING IN DESIGN AND DETAIL IS KOHLER CO. PROPERTY AND MUST NOT BE USED EXCEPT IN CONNECTION WITH KOHLER CO. WORK. ALL RIGHTS OF DESIGN OR INVENTION ARE RESERVED. | |
| | | | | | | | |
| | | | |  THIRD ANGLE PROJECTION | | TITLE | |
| | | | | | | | |
| | | | | APPROVALS | | DATE | |
| | | | | DRAWN SAK | | 8-19-17 | |
| | | | | CHECKED DJV | | 8-19-17 | |
| | | | | APPROVED KJT | | 8-19-17 | |
| | | | | SCALE | | 0, 40 | CAD NO. |
| | | | | DWG NO. | | ADV-8954 | |
| | | | | SHEET | | of 2 | D |



INSTALLATION GUIDELINES

- 1) EXHAUST IS AIMED AWAY FROM OR PARALLEL TO THE STRUCTURE.
- 2) EXHAUST IS NOT DIRECTED AT PLAY AREAS, PATIOS OR OTHER AREAS WHERE PEOPLE CONGREGATE.
- 3) THE NEAREST WINDOW, VENT, DOOR OR SIMILAR STRUCTURE OPENING IS AT LEAST 5 FEET FROM THE EXHAUST END OF THE SET.
- 4) SET HAS PROPER OFFSET FROM STRUCTURE.
- 5) WINDOWS & DOORS ON ADJACENT WALLS ARE CLOSED.
- 6) FURNACE AND OTHER SIMILAR INTAKES ARE AT LEAST 10 FEET FROM EXHAUST END OF SET.
- 7) 4" THICK CONCRETE PAD EXTENDING 6" BEYOND GENSET ON ALL SIDES.
- 8) WEED BARRIER & GRAVEL BED TO EXTEND 4 FT. FROM EXHAUST OUTLET. NO PLANTS, SHRUBS OR OTHER COMBUSTIBLES ALLOWED IN GRAVEL AREA.
- 9) SENSITIVE PLANTS, PATIO FURNITURE, ETC. ARE AT LEAST 8 FEET FROM EXHAUST END OF SET.
- 10) REFER TO OWNERS MANUAL FOR OTHER INSTALLATION CONSTRAINTS.

NOTE:
THE RECOMMENDED DISTANCE FROM A STRUCTURE IS DEPENDENT ON STATE AND LOCAL CODES.
NFPA 37 (STANDARDS FOR THE INSTALLATION AND USE OF STATIONARY COMBUSTION ENGINES AND GAS TURBINES) STATES THIS DISTANCE SHOULD BE AT LEAST 5 FEET FROM A COMBUSTIBLE MATERIAL.
FOR INSTALLATIONS NEAR NON-COMBUSTIBLE MATERIAL BE SURE TO LEAVE A MINIMUM DISTANCE OF 3 FEET TO ENSURE PROPER GENERATOR COOLING.

60 RCLB

| REV | DATE | ON COMPOSITE DWGS, SEE PART NO. FOR REVISION LEVEL | BY | DO NOT SCALE. REFERENCE THE MODEL FOR ALL UNSPECIFIED DIMENSIONS | | | |
|-----|---------|--|-----|---|------|---|--------------|
| - | 8-19-17 | NEW DRAWING [CT178070] | SAK | UNLESS OTHERWISE SPECIFIED: ALL DIMENSIONS IN MILLIMETERS GENERAL TOLERANCES: N/A | | | |
| | | | | | | | |
| | | | | <div>THIRD ANGLE PROJECTION</div> | | | |
| | | | | | | | |
| | | | | APPROVALS | DATE | <div>COHLER</div> <div>COHLER, WISCONSIN 53044</div> <div>THIS DRAWING IN DESIGN AND DETAIL IS KOHLER CO. PROPERTY AND MUST NOT BE USED EXCEPT IN CONNECTION WITH KOHLER CO. WORK. ALL RIGHTS OF DESIGN OR INVENTION ARE RESERVED.</div> <div>TITLE</div> <div>DIMENSION PRINT, 48RCLB/60RCLB</div> | |
| | | | | DRAWN | SAK | | |
| | | | | CHECKED | DJV | | |
| | | | | APPROVED | KJT | | |
| | | | | SCALE 0.40 | | CAD NO. | SHEET 2 of 2 |
| | | | | DWG NO. | | ADV-8954 | |

D