

## MULTI-WEDGE LOG SPLITTER

100236 – Horizontal Operation

UPC 850878006228

### 196cc CHAMPION OHV ENGINE

- 4 Stroke
- Single Cylinder
- Air Cooled
- Low Oil Shut-Off
- Recoil Start
- Cast Iron Sleeve for Durability

#### Key Features:

- 240 Cycles Per Hour
- Horizontal Operation
- Fits In Most Truck Beds
- Integrated Log Catchers
- 2 in. Ball Coupler
- 50 State Compliant (EPA/CARB certified)

#### Specifications

- Max Log Size - 22 in. (55.9 cm)
- Max Log Weight - 100 lb. (45 kg)
- Cycle Time - 15 seconds
- Hydraulic Cylinder - 3.9 in. x 21 in.  
(10 cm x 53.3 cm)
- 2-Stage Pump - 11 GPM
- Max Pressure - 3600 psi
- Hydraulic Oil System Capacity - 3.2 Gallon (12.1 L)
- Hydraulic Oil Tank Capacity - 2.1 Gallon (7.9 L)
- 16 in. (40.6 cm) DOT Approved Wheels

#### Crate:

G.W.: 369.8 lbs. (180 kg)  
MEAS.: 44.1 in. x 31.9 in. x 20.1 in.  
112 cm x 81 cm x 51 cm

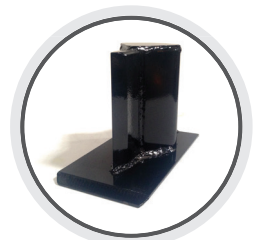
#### Unit:

N.W.: 352.7 lbs. (160 kg)  
MEAS.: 38.8 in. x 36.9 in. x 95.6 in.  
98.5 cm x 93.6 cm x 242.8 cm



**2 YEAR LIMITED WARRANTY**  
Parts & Labor

Champion Power Equipment, Inc.  
12039 Smith Ave • Santa Fe Springs, CA 90670 • USA  
1-877-338-0999 • [www.championpowerequipment.com](http://www.championpowerequipment.com)  
MADE IN CHINA / HECHO EN CHINA / FABRIQUÉ EN CHINE



Single-wedge  
attachment included



**4 CUTS IN  
ONE PASS**  
MULTI-WEDGE

\*We are always working to improve our products. Therefore, the actual product may differ slightly from the image used.